



[Go to Product page](#)

Datasheet for ABIN1351296

DDR1 Protein (AA 22-876) (GST tag)

1 Image

Overview

Quantity:	10 µg
Target:	DDR1
Protein Characteristics:	AA 22-876
Origin:	Human
Source:	Wheat germ
Protein Type:	Recombinant
Purification tag / Conjugate:	This DDR1 protein is labelled with GST tag.
Application:	Western Blotting (WB), ELISA, Affinity Purification (AP), Antibody Array (AA)

Product Details

Purpose:	DDR1 (Human) Recombinant Protein (P01)
Sequence:	MKGHFDPKAC RYALGMQDRT IPDSDISASS SWSDSTAARH SRLESSDGDG AWCPAGSVFP KEEEYLQVDL QRLHLVALVG TQGRHAGGLG KEFSRSYRLR YSRDGRRWGMG WKDRWGQEVI SGNEDPEGVV LKDLGPPMVA RLVRFYPRAD RVMSVCLRVE LYGCLWRDGL LSYTAPVGQT MYLSEAVYLN DSTYDGHTVG GLQYGGLGQL ADGVVGLDDF RKSQELRVWP GYDYVGWSNH SFSSGYVEME FEFDRLRAFQ AMQVHCNNMH TLGARLPGGV ECRFRRGPM AWEGEPMRHN LGGNLGDPRA RAVSVPLGGR VARFLQCRFL FAGPWLLFSE ISFISDVVNN SSPALGGTFP PAPWWPPGPP PTNFSSLELE PRGQQPVAKA EGSPTAILIG CLVAIIIIII LIALMLWRL HWRRLLSKAE RRVLEEELTV HLSVPGDTIL INNRPGPREP PPYQEPRPRG NPPHSAPCVP NGSAYSGDYM EPEKPGAPLL PPPPQNSVPH YAEADIVTLQ GVTGGNTYAV PALPPGAVGD GPPRVDFPRS RLRFKEKLGE GQFGEVHLCE VDSPQDLVSL DFPLNVRKGH PLLVAVKILR PDATKNARND FLKEVKIMSR LKDPNIIRLL GVCVQDDPLC MITDYMENGD LNQFLSAHQL

Product Details

EDKAAEGAPG DGQAAQGPTI SYPMLLHVAA QIASGMRYLA TLNFVHRDLA TRNCLVGENF
TIKIADFGMS RNLYAGDYR VQGRAVLPIR WMAWECILMG KFTTASDVWA FGVTLWEVLM
LCRAQPFQQL TDEQVIENAG EFFRDQGRQV YLSRPPACPQ GLYELMLRCW SRESEQRPPF
SQLHRFLAED ALNTV

Characteristics: Human DDR1 full-length ORF (AAH08716.1, 22 a.a. - 876 a.a.) recombinant protein with GST-tag at N-terminal.

Purification: in vitro wheat germ expression system

Target Details

Target: DDR1

Alternative Name: DDR1 ([DDR1 Products](#))

Background: Full Gene Name: discoidin domain receptor tyrosine kinase 1
Synonyms: CAK,CD167,DDR,EDDR1,MCK10,NEP,NTRK4,PTK3,PTK3A,RTK6,TRKE

Gene ID: 780

Pathways: [RTK Signaling, Smooth Muscle Cell Migration](#)

Application Details

Application Notes: Optimal working dilution should be determined by the investigator.

Comment: Preparation method: in vitro, wheat germ expression system
Product Quality tested by: 12.5% SDS-PAGE Stained with Coomassie Blue.

Restrictions: For Research Use only

Handling

Buffer: 50 mM Tris-HCl, 10 mM reduced Glutathione, pH =8.0 in the elution buffer.

Handling Advice: Aliquot to avoid repeated freezing and thawing.

Storage: -80 °C

Storage Comment: Best use within three months from the date of receipt of this protein.

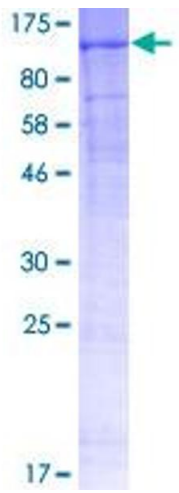


Image 1.