



[Go to Product page](#)

Datasheet for ABIN1351331

DDX20 Protein (AA 725-824) (GST tag)

1 Image

Overview

Quantity:	10 µg
Target:	DDX20
Protein Characteristics:	AA 725-824
Origin:	Human
Source:	Wheat germ
Protein Type:	Recombinant
Purification tag / Conjugate:	This DDX20 protein is labelled with GST tag.
Application:	ELISA, Western Blotting (WB), Antibody Array (AA), Affinity Purification (AP)

Product Details

Purpose:	DDX20 (Human) Recombinant Protein (Q01)
Sequence:	EGASQRAKQS RRNLPRRSSF RLQTEAQEDD WYDCHREIRL SFSDTYQDYE EYWRAYYRAW QEYYAAASHS YYWNAQRHPS WMAAYHMNTI YLQEMMHSNQ
Characteristics:	Human DDX20 partial ORF (NP_009135, 725 a.a. - 824 a.a.) recombinant protein with GST-tag at N-terminal.
Purification:	in vitro wheat germ expression system

Target Details

Target:	DDX20
Alternative Name:	DDX20 (DDX20 Products)

Target Details

Background:	Full Gene Name: DEAD (Asp-Glu-Ala-Asp) box polypeptide 20 Synonyms: DKFZp434H052,DP103,GEMIN3
Gene ID:	11218
NCBI Accession:	NM_007204
Pathways:	Ribonucleoprotein Complex Subunit Organization

Application Details

Application Notes:	Optimal working dilution should be determined by the investigator.
Comment:	Preparation method: in vitro, wheat germ expression system Product Quality tested by: 12.5% SDS-PAGE Stained with Coomassie Blue.
Restrictions:	For Research Use only

Handling

Buffer:	50 mM Tris-HCl, 10 mM reduced Glutathione, pH =8.0 in the elution buffer.
Handling Advice:	Aliquot to avoid repeated freezing and thawing.
Storage:	-80 °C
Storage Comment:	Best use within three months from the date of receipt of this protein.

Images

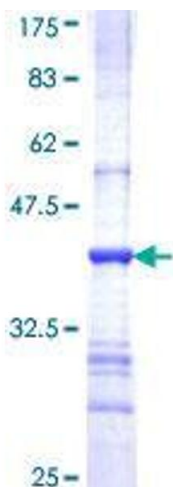


Image 1.