



[Go to Product page](#)

Datasheet for ABIN1351341

DDX28 Protein (AA 1-540) (GST tag)

1 Image

Overview

Quantity:	25 µg
Target:	DDX28
Protein Characteristics:	AA 1-540
Origin:	Human
Source:	Wheat germ
Protein Type:	Recombinant
Purification tag / Conjugate:	This DDX28 protein is labelled with GST tag.
Application:	ELISA, Western Blotting (WB), Antibody Array (AA), Affinity Purification (AP)

Product Details

Purpose:	DDX28 (Human) Recombinant Protein (P01)
Sequence:	MALARPVRLF SLVTRLLLAP RRGLTVRSPD EPLPVVRIPV ALQRQLEQRQ SRRRNLP LVRPGPLLVS ARRPELNQPA RLTLGRWERA PLASQGWKSR RARRDHFSIE RAQQEAPAVR KLSSKGSFAD LGLEPRVLHA LQEAPEVVQ PTTVQSSTIP SLLRGRHVVC AAETGSGKTL SYLLPLLQRL LGQPSLDSLIPAPRGLVLV PSRELAQQVR AVAQLGRSL GLLVRDLEGG HGMRRIRLQL SRQPSADVLV ATPGALWKAL KSRLISLEQL SFLVLDEADT LLEDSFLELV DYILEKSHIA EGPADLEDPF NPKAQLVLVG ATFPEGVGQL LNKVASPDAV TTITSSKLHC IMPHVKQTFL RLKGADKVAE LVHILKHRDR AERTGPSGTV LVFCNSSTV NWLGYILDH KIQHLRLQGQ MPALMRVGIF QSFQKSSRDI LLCTDIASRG LDSTGVELVV NYDFPPTLQD YIHRAGRVR VVSEVPGTVI SFVTHPWDVS LVQKIELAAR RRRSLPGLAS SVKEPLPQAT
Characteristics:	Human DDX28 full-length ORF (NP_060850.1, 1 a.a. - 540 a.a.) recombinant protein with GST-tag at N-terminal.

Product Details

Purification: in vitro wheat germ expression system

Target Details

Target: DDX28

Alternative Name: DDX28 ([DDX28 Products](#))

Background: Full Gene Name: DEAD (Asp-Glu-Ala-Asp) box polypeptide 28
Synonyms: FLJ11282,MDDX28

Gene ID: 55794

NCBI Accession: [NM_018380](#)

Application Details

Application Notes: Optimal working dilution should be determined by the investigator.

Comment: Preparation method: in vitro, wheat germ expression system
Product Quality tested by: 12.5% SDS-PAGE Stained with Coomassie Blue.

Restrictions: For Research Use only

Handling

Buffer: 50 mM Tris-HCl, 10 mM reduced Glutathione, pH =8.0 in the elution buffer.

Handling Advice: Aliquot to avoid repeated freezing and thawing.

Storage: -80 °C

Storage Comment: Best use within three months from the date of receipt of this protein.

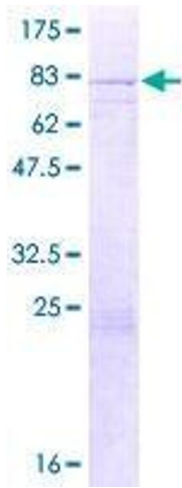


Image 1.