



[Go to Product page](#)

Datasheet for ABIN1351343

DDX39 Protein (AA 1-427) (GST tag)

1 Image

Overview

Quantity:	10 µg
Target:	DDX39
Protein Characteristics:	AA 1-427
Origin:	Human
Source:	Wheat germ
Protein Type:	Recombinant
Purification tag / Conjugate:	This DDX39 protein is labelled with GST tag.
Application:	ELISA, Western Blotting (WB), Antibody Array (AA), Affinity Purification (AP)

Product Details

Purpose:	DDX39 (Human) Recombinant Protein (P01)
Sequence:	MAEQDVENDL LDYDEEEEPQ APQESTPAPP KKDIKGSYVS IHSSGFRDFL LKPELLRAIV DCGFEHPSEV QHECIPQAIL GMDVLCQAKS GMGKTAVFVL ATLQIQIEPVN GQVTVLVMCH TRELAFQISK EYERFSKYMP SVKVSVFFGG LSIKKDEEVL KKNCPHVVVG TPGRILALVR NRSFSLKNVK HFVLDECDKM LEQLDMRRDV QEIFRLTPHE KQCMMFSATL SKDIRPVCRK FMQDPMEVFV DDETKLTLHG LQQYYVKLKD SEKNRKLFDL LDVLEFNQVI IFVKSVMQRCM ALAQLLVEQN FPAIAIHRGM AQEERLSRYQ QFKDFQRRIL VATNLFGGRGM DIERNVIVFN YDMPEDSDTY LHRVARAGRF GTKGLAITFV SDENDAKILN DVQDRFEVNV AELPEEIDIS TYIEQSR
Characteristics:	Human DDX39 full-length ORF (NP_005795.2, 1 a.a. - 427 a.a.) recombinant protein with GST-tag at N-terminal.
Purification:	in vitro wheat germ expression system

Target Details

Target:	DDX39
Alternative Name:	DDX39 (DDX39 Products)
Background:	Full Gene Name: DEAD (Asp-Glu-Ala-Asp) box polypeptide 39 Synonyms: BAT1,BAT1L,DDXL,MGC18203,MGC8417,URH49
Gene ID:	10212
NCBI Accession:	NM_005804

Application Details

Application Notes:	Optimal working dilution should be determined by the investigator.
Comment:	Preparation method: in vitro, wheat germ expression system Product Quality tested by: 12.5% SDS-PAGE Stained with Coomassie Blue.
Restrictions:	For Research Use only

Handling

Buffer:	50 mM Tris-HCl, 10 mM reduced Glutathione, pH =8.0 in the elution buffer.
Handling Advice:	Aliquot to avoid repeated freezing and thawing.
Storage:	-80 °C
Storage Comment:	Best use within three months from the date of receipt of this protein.

Images

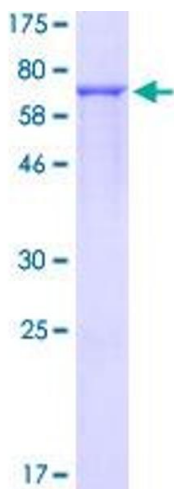


Image 1.