



[Go to Product page](#)

Datasheet for ABIN1351384

## DDX60 Protein (AA 1-183) (GST tag)

### 1 Image

#### Overview

Quantity:	10 µg
Target:	DDX60
Protein Characteristics:	AA 1-183
Origin:	Human
Source:	Wheat germ
Protein Type:	Recombinant
Purification tag / Conjugate:	This DDX60 protein is labelled with GST tag.
Application:	Antibody Array (AA), Affinity Purification (AP), ELISA, Western Blotting (WB)

#### Product Details

Purpose:	FLJ20035 (Human) Recombinant Protein (P01)
Sequence:	MKIMEDFTTF LRIVSKLADM NQEYQLPLSK IKFTGKECED SQLVSHLMSC KEGRVAISPF VCLSGNFDDD LLRLETPNHV TLGTIGVNRS QAPVLLSQKF DNRGRKMSLN AYALDFYKHG SLIGLVQDNR MNEGDAYYLL KDFALTIKSI SVSLRELLEN EDDNVVLAPE QLSTTFWEKL NKV
Characteristics:	Human FLJ20035 full-length ORF ( AAH20601.1, 1 a.a. - 183 a.a.) recombinant protein with GST-tag at N-terminal.
Purification:	in vitro wheat germ expression system

#### Target Details

Target:	DDX60
Alternative Name:	DDX60 ( <a href="#">DDX60 Products</a> )

## Target Details

Background: Full Gene Name: DEAD (Asp-Glu-Ala-Asp) box polypeptide 60  
Synonyms: FLJ10787,FLJ20035

Gene ID: 55601

## Application Details

Application Notes: Optimal working dilution should be determined by the investigator.

Comment: Preparation method: in vitro, wheat germ expression system  
Product Quality tested by: 12.5% SDS-PAGE Stained with Coomassie Blue.

Restrictions: For Research Use only

## Handling

Buffer: 50 mM Tris-HCl, 10 mM reduced Glutathione, pH =8.0 in the elution buffer.

Handling Advice: Aliquot to avoid repeated freezing and thawing.

Storage: -80 °C

Storage Comment: Best use within three months from the date of receipt of this protein.

## Images

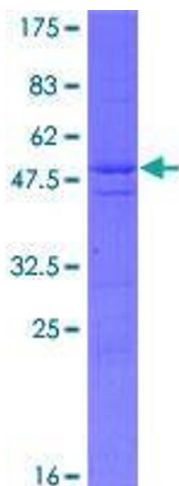


Image 1.