



[Go to Product page](#)

Datasheet for ABIN1351387

## DEAF1 Protein (AA 466-564) (GST tag)

### 1 Image

#### Overview

Quantity:	10 µg
Target:	DEAF1
Protein Characteristics:	AA 466-564
Origin:	Human
Source:	Wheat germ
Protein Type:	Recombinant
Purification tag / Conjugate:	This DEAF1 protein is labelled with GST tag.
Application:	ELISA, Western Blotting (WB), Antibody Array (AA), Affinity Purification (AP)

#### Product Details

Purpose:	DEAF1 (Human) Recombinant Protein (Q01)
Sequence:	TAQQLKTLFE QAKHASTYRE AATNQAKIHA DAERKEQSCV NCGREAMSEC TGCHKVNYCS TFCQRKDWKD HQHICGQSAA VTVQADEVHV AESVMEKVT
Characteristics:	Human DEAF1 partial ORF ( NP_066288, 466 a.a. - 564 a.a.) recombinant protein with GST-tag at N-terminal.
Purification:	in vitro wheat germ expression system

#### Target Details

Target:	DEAF1
Alternative Name:	DEAF1 ( <a href="#">DEAF1 Products</a> )

## Target Details

Background:	Full Gene Name: deformed epidermal autoregulatory factor 1 (Drosophila) Synonyms: NU DR,SPN,ZMYND5
Gene ID:	10522
NCBI Accession:	<a href="#">NM_021008</a>
Pathways:	<a href="#">Tube Formation</a>

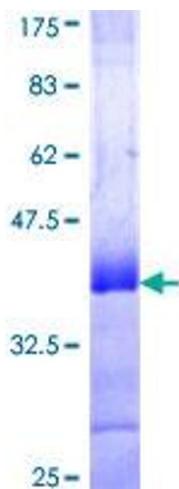
## Application Details

Application Notes:	Optimal working dilution should be determined by the investigator.
Comment:	Preparation method: in vitro, wheat germ expression system Product Quality tested by: 12.5% SDS-PAGE Stained with Coomassie Blue.
Restrictions:	For Research Use only

## Handling

Buffer:	50 mM Tris-HCl, 10 mM reduced Glutathione, pH =8.0 in the elution buffer.
Handling Advice:	Aliquot to avoid repeated freezing and thawing.
Storage:	-80 °C
Storage Comment:	Best use within three months from the date of receipt of this protein.

## Images



**Image 1.**