

Datasheet for ABIN1351389
DEAF1 Protein (AA 133-222) (GST tag)



[Go to Product page](#)

1 Image

Overview

Quantity:	10 µg
Target:	DEAF1
Protein Characteristics:	AA 133-222
Origin:	Human
Source:	Wheat germ
Protein Type:	Recombinant
Purification tag / Conjugate:	This DEAF1 protein is labelled with GST tag.
Application:	ELISA, Western Blotting (WB), Antibody Array (AA), Affinity Purification (AP)

Product Details

Purpose:	DEAF1 (Human) Recombinant Protein (Q02)
Sequence:	TALQIGDSL N TEKATLIVH TDGSIVETTG LKGPAAPLTP GPQSPPTPLA PGQEKGGTKY NWDPSVYDSE LPVRCRNISG TLYKNRLGSG
Characteristics:	Human DEAF1 partial ORF (NP_066288.2, 133 a.a. - 222 a.a.) recombinant protein with GST-tag at N-terminal.
Purification:	in vitro wheat germ expression system

Target Details

Target:	DEAF1
Alternative Name:	DEAF1 (DEAF1 Products)

Target Details

Background:	Full Gene Name: deformed epidermal autoregulatory factor 1 (Drosophila) Synonyms: NUDR,SPN,ZMYND5
Gene ID:	10522
NCBI Accession:	NM_021008
Pathways:	Tube Formation

Application Details

Application Notes:	Optimal working dilution should be determined by the investigator.
Comment:	Preparation method: in vitro, wheat germ expression system Product Quality tested by: 12.5% SDS-PAGE Stained with Coomassie Blue.
Restrictions:	For Research Use only

Handling

Buffer:	50 mM Tris-HCl, 10 mM reduced Glutathione, pH =8.0 in the elution buffer.
Handling Advice:	Aliquot to avoid repeated freezing and thawing.
Storage:	-80 °C
Storage Comment:	Best use within three months from the date of receipt of this protein.

Images

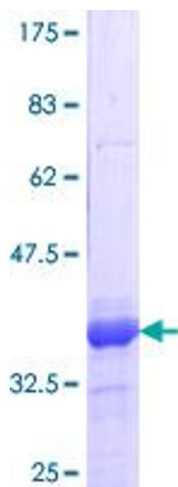


Image 1.