

Datasheet for ABIN1351398
DEDD Protein (GST tag)



[Go to Product page](#)

1 Image

Overview

Quantity:	10 µg
Target:	DEDD
Origin:	Human
Source:	Wheat germ
Protein Type:	Recombinant
Purification tag / Conjugate:	This DEDD protein is labelled with GST tag.
Application:	ELISA, Western Blotting (WB), Antibody Array (AA), Affinity Purification (AP)

Product Details

Purpose:	DEDD (Human) Recombinant Protein (P01)
Sequence:	MAGLKRRASQ VWPEEHGEQE HGLYSLHRMF DIVGTHLTHR DVRVLSFLFV DVIDDHERGL IRNGRDFLLA LERQGRCDDES NFRQVLQLLR IITRHDLLPY VTLKRRRAVC PDLVDKYLEE TSIRYVTPRA LSDPEPRPPQ PSKTVPHPYP VVCCPTSGPQ MCSKRPARGR ATLGSRKRR KSVTPDPKEK QTCDIRLRVR AEYCQHETAL QGNVFSNKQD PLERQFERFN QANTILKSRD LGSIICDIKF SELTYLDAFW RDYINGSLLE ALKGVFITDS LKQAVGHEAI KLLVNVDEED YELGRQKLLR NLMLQALP
Characteristics:	Human DEDD full-length ORF (NP_001034800.1, 1 a.a. - 318 a.a.) recombinant protein with GST-tag at N-terminal.
Purification:	in vitro wheat germ expression system

Target Details

Target:	DEDD
Alternative Name:	DEDD (DEDD Products)
Background:	Gene: death effector domain containing Synonyms: CASP8IP1, DEDD1, DEFT, FLDED1, KE05
Gene ID:	9191
NCBI Accession:	NM_001039711

Application Details

Application Notes:	Optimal working dilution should be determined by the investigator.
Restrictions:	For Research Use only

Handling

Buffer:	50 mM Tris-HCl, 10 mM reduced Glutathione, pH =8.0 in the elution buffer.
Handling Advice:	Aliquot to avoid repeated freezing and thawing.
Storage:	-80 °C
Storage Comment:	Best use within three months from the date of receipt of this protein.

Images

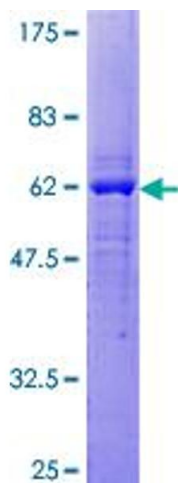


Image 1.