



Datasheet for ABIN1351446

## DENND5B Protein (AA 1-507) (GST tag)



[Go to Product page](#)

### 1 Image

#### Overview

Quantity:	10 µg
Target:	DENND5B
Protein Characteristics:	AA 1-507
Origin:	Human
Source:	Wheat germ
Protein Type:	Recombinant
Purification tag / Conjugate:	This DENND5B protein is labelled with GST tag.
Application:	ELISA, Western Blotting (WB), Antibody Array (AA), Affinity Purification (AP)

#### Product Details

Purpose:	MGC24039 (Human) Recombinant Protein (P01)
Sequence:	MLCMPKGLSF RTQTDNKDPQ FHSFIITRED GSRTYGFVLT FYEEVTSKQI CTAMQTLYQM HNAEHYSSVY ASSSCSMDSL ASSLDEGDTT SLLKLQRYNS YDISRDTLYV SKSICLITPL PFMQACKKFL IQLYKAVTSQ QPPPLPLESY IHNILYEVPL PPPGRSLKFY GVEPVICQR PGPSELPLSD YPLREAFELL GLENLVQVFT CVLLEMQILL YSQDYQRLMT VAEGITLLF PFQWQHVVYP ILPASLLHFL DAPVPYLMGL QSKEGTDRSK LELPQEANLC FVDIDNHFIE LPEEFPQFPN KVDFIQELSE VLVQFGIPPE GSLHCSESTS KLKNMVLKDL VNDKKNGNVC TNNISMYYELL KGNETIARLQ ALAKRTGVAV EKMDLSASLG EKDKDLKLHC EEAELRDYQL NVQLREVFAN RFTQMFADYE AFVIQTAQDM ESWLTNREQM QNFDKVKRTI VLLWLLVAL LLILTFLNFL FFCAYAYPYI IDFVNLF
Characteristics:	Human MGC24039 full-length ORF ( AAH20855, 1 a.a. - 507 a.a.) recombinant protein with GST-tag at N-terminal.

## Product Details

---

Purification: in vitro wheat germ expression system

## Target Details

---

Target: DENND5B

Alternative Name: DENND5B ([DENND5B Products](#))

Background: Full Gene Name: DENN/MADD domain containing 5B  
Synonyms: DKFZp686P1174,FLJ41648,FLJ43333,MGC24039

Gene ID: 160518

## Application Details

---

Application Notes: Optimal working dilution should be determined by the investigator.

Comment: Preparation method: in vitro, wheat germ expression system  
Product Quality tested by: 12.5% SDS-PAGE Stained with Coomassie Blue.

Restrictions: For Research Use only

## Handling

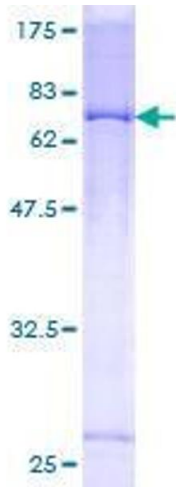
---

Buffer: 50 mM Tris-HCl, 10 mM reduced Glutathione, pH =8.0 in the elution buffer.

Handling Advice: Aliquot to avoid repeated freezing and thawing.

Storage: -80 °C

Storage Comment: Best use within three months from the date of receipt of this protein.



**Image 1.**