



[Go to Product page](#)

Datasheet for ABIN1351465

## DERL1 Protein (AA 1-251) (GST tag)

### 1 Image

#### Overview

Quantity:	10 µg
Target:	DERL1
Protein Characteristics:	AA 1-251
Origin:	Human
Source:	Wheat germ
Protein Type:	Recombinant
Purification tag / Conjugate:	This DERL1 protein is labelled with GST tag.
Application:	ELISA, Western Blotting (WB), Antibody Array (AA), Affinity Purification (AP)

#### Product Details

Purpose:	DERL1 (Human) Recombinant Protein (P01)
Sequence:	MSDIGDWFRS IPAITRYWFA ATVAVPLVGK LGLISPAYLF LWPEAFLYRF QIWRPITATF YFPVGPSTGF LYLVNLYFLY QYSTRLETGA FDGRPADYLF MLLFNWICIV ITGLAMDMQL LMIPLIMSVL YVWAQLNRDM IVSFWFGTRF KACYLPWVIL GFNYIIGGSV INELIGNLVG HLYFFLMFRY PMDLGGRNFL STPQFLYRWL PSRRGGVSGF GVPPASMRRA ADQNGGGGRH NWGQGFRLGD Q
Characteristics:	Human DERL1 full-length ORF ( NP_077271.1, 1 a.a. - 251 a.a.) recombinant protein with GST-tag at N-terminal.
Purification:	in vitro wheat germ expression system

## Target Details

Target:	DERL1
Alternative Name:	DERL1 ( <a href="#">DERL1 Products</a> )
Background:	Gene: Der1-like domain family, member 1 Synonyms: DER-1, DER1, FLJ13784, FLJ42092, MGC3067, PRO2577
Gene ID:	79139
NCBI Accession:	<a href="#">NM_024295</a>
Pathways:	<a href="#">ER-Nucleus Signaling</a>

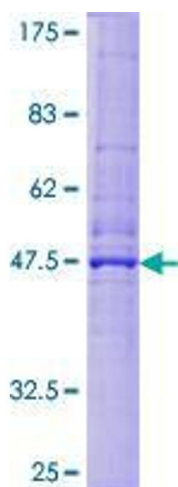
## Application Details

Application Notes:	Optimal working dilution should be determined by the investigator.
Restrictions:	For Research Use only

## Handling

Buffer:	50 mM Tris-HCl, 10 mM reduced Glutathione, pH =8.0 in the elution buffer.
Handling Advice:	Aliquot to avoid repeated freezing and thawing.
Storage:	-80 °C
Storage Comment:	Best use within three months from the date of receipt of this protein.

## Images



**Image 1.**