



[Go to Product page](#)

Datasheet for ABIN1351471

Desmin Protein (DES) (AA 361-470) (GST tag)

1 Image

Overview

Quantity:	10 µg
Target:	Desmin (DES)
Protein Characteristics:	AA 361-470
Origin:	Human
Source:	Wheat germ
Protein Type:	Recombinant
Purification tag / Conjugate:	This Desmin protein is labelled with GST tag.
Application:	Western Blotting (WB), ELISA, Antibody Array (AA), Affinity Purification (AP)

Product Details

Purpose:	DES (Human) Recombinant Protein (Q01)
Sequence:	SGYQDNIARL EEEIRHLKDE MARHLREYQD LLNVKMALDV EIATYRKLLE GEESRINLPI QTYSALNFRE TSPEQRGSEV HTKKTVMIKT IETRDGEVVS EATQQQHEVL
Characteristics:	Human DES partial ORF (NP_001918.3, 361 a.a. - 470 a.a.) recombinant protein with GST-tag at N-terminal.
Purification:	in vitro wheat germ expression system

Target Details

Target:	Desmin (DES)
Alternative Name:	DES (DES Products)

Target Details

Background:	Full Gene Name: desmin Synonyms: CMD1I,CSM1,CSM2,FLJ12025,FLJ39719,FLJ41013,FLJ41793
Gene ID:	1674
NCBI Accession:	NM_001927

Application Details

Application Notes:	Optimal working dilution should be determined by the investigator.
Comment:	Preparation method: in vitro, wheat germ expression system Product Quality tested by: 12.5% SDS-PAGE Stained with Coomassie Blue.
Restrictions:	For Research Use only

Handling

Buffer:	50 mM Tris-HCl, 10 mM reduced Glutathione, pH =8.0 in the elution buffer.
Handling Advice:	Aliquot to avoid repeated freezing and thawing.
Storage:	-80 °C
Storage Comment:	Best use within three months from the date of receipt of this protein.

Images

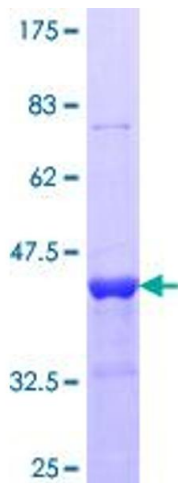


Image 1.