



[Go to Product page](#)

Datasheet for ABIN1351495

DGCR14 Protein (AA 1-395) (GST tag)

1 Image

Overview

Quantity:	10 µg
Target:	DGCR14
Protein Characteristics:	AA 1-395
Origin:	Human
Source:	Wheat germ
Protein Type:	Recombinant
Purification tag / Conjugate:	This DGCR14 protein is labelled with GST tag.
Application:	ELISA, Western Blotting (WB), Antibody Array (AA), Affinity Purification (AP)

Product Details

Purpose:	DGCR14 (Human) Recombinant Protein (P01)
Sequence:	MLGACFPNLS SGDVMVFGPG GLGQPVLHPV LVLGHHQQPV LGFGSKLVVG PVVGPQACLG VQFALSAVLA LPLPLEGGRR RGFGGLGGLQP RVAEDLIDVE PLADVGLQHA VDEVLAGQ VLGAREVHTV LLLDTQHLPD VGVVIGHGAA DHDVQDHAQA PDVIHLGLVG DALQHLGGCI CCRPAEGLAE DDAPIAVPQA ALGEAKVRQL DVEVLVEEKV LALEVPVDDV QVVAVLDGGG ELSEHLACHV LMQGSLALDE LEKRLAPLPS TSPRHVGQQA LSSFTLPEAS GWAALGWAST QGWDQHCLR VTSANELIKP RSGGGDWAEG EQGLWNRGSQ AGLAGAPTPR PLEGLSLSPGQ DSGGPAAAAL VSLSQVKLEG RRPTSSLFAS PGCGD
Characteristics:	Human DGCR14 full-length ORF (AAH37829.1, 1 a.a. - 395 a.a.) recombinant protein with GST-tag at N-terminal.
Purification:	in vitro wheat germ expression system

Target Details

Target:	DGCR14
Alternative Name:	DGCR14 (DGCR14 Products)
Background:	Full Gene Name: DiGeorge syndrome critical region gene 14 Synonyms: DGCR13,DGS-H,DGS-I,DGSH,DGSI,ES2,Es2el
Gene ID:	8220

Application Details

Application Notes:	Optimal working dilution should be determined by the investigator.
Comment:	Preparation method: in vitro, wheat germ expression system Product Quality tested by: 12.5% SDS-PAGE Stained with Coomassie Blue.
Restrictions:	For Research Use only

Handling

Buffer:	50 mM Tris-HCl, 10 mM reduced Glutathione, pH =8.0 in the elution buffer.
Handling Advice:	Aliquot to avoid repeated freezing and thawing.
Storage:	-80 °C
Storage Comment:	Best use within three months from the date of receipt of this protein.

Images

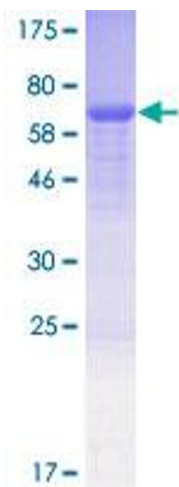


Image 1.