



[Go to Product page](#)

Datasheet for ABIN1351497

DGCR14 Protein (AA 377-476) (GST tag)

1 Image

Overview

Quantity:	10 µg
Target:	DGCR14
Protein Characteristics:	AA 377-476
Origin:	Human
Source:	Wheat germ
Protein Type:	Recombinant
Purification tag / Conjugate:	This DGCR14 protein is labelled with GST tag.
Application:	ELISA, Western Blotting (WB), Antibody Array (AA), Affinity Purification (AP)

Product Details

Purpose:	DGCR14 (Human) Recombinant Protein (Q01)
Sequence:	RVTENLASLT PKGLSPAMSP ALQRLVSRTA SKYTDRALRA SYTPSPARST HLKTPASGLQ TPTSTPAPGS ATRTPLTQDP ASITDNLQL PARRKASDFF
Characteristics:	Human DGCR14 partial ORF (NP_073210, 377 a.a. - 476 a.a.) recombinant protein with GST-tag at N-terminal.
Purification:	in vitro wheat germ expression system

Target Details

Target:	DGCR14
Alternative Name:	DGCR14 (DGCR14 Products)

Target Details

Background:	Full Gene Name: DiGeorge syndrome critical region gene 14 Synonyms: DGCR13,DGS-H,DGS-I,DGSH,DGSI,ES2,Es2el
Gene ID:	8220
NCBI Accession:	NM_022719

Application Details

Application Notes:	Optimal working dilution should be determined by the investigator.
Comment:	Preparation method: in vitro, wheat germ expression system Product Quality tested by: 12.5% SDS-PAGE Stained with Coomassie Blue.
Restrictions:	For Research Use only

Handling

Buffer:	50 mM Tris-HCl, 10 mM reduced Glutathione, pH =8.0 in the elution buffer.
Handling Advice:	Aliquot to avoid repeated freezing and thawing.
Storage:	-80 °C
Storage Comment:	Best use within three months from the date of receipt of this protein.

Images

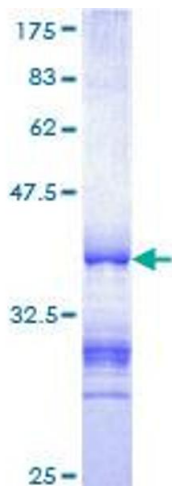


Image 1.