



[Go to Product page](#)

Datasheet for ABIN1351528

## Seladin 1 Protein (AA 1-516) (GST tag)

### 1 Image

#### Overview

Quantity:	25 µg
Target:	Seladin 1 (DHCR24)
Protein Characteristics:	AA 1-516
Origin:	Human
Source:	Wheat germ
Protein Type:	Recombinant
Purification tag / Conjugate:	This Seladin 1 protein is labelled with GST tag.
Application:	ELISA, Western Blotting (WB), Antibody Array (AA), Affinity Purification (AP)

#### Product Details

Purpose:	DHCR24 (Human) Recombinant Protein (P01)
Sequence:	MEPAVSLAVC ALLFLLWVRL KGLEFVLIHQ RWFVCLFLL PLSLIFDIYY YVRAWVFKL SSAPRLHEQR VRDIQKQVRE WKEQGSKTFM CTGRPGWLT SLRVGKYKKT HKNIMINLMD ILEVDTKKQI VRVEPLVTMG QVTALLTSIG WTLPLPELD DLTVGGLIMG TGISSSHKY GLFQHICTAY ELVLADGSFV RCTPSENSDL FYAVPWSCGT LGFLVAAEIR IIPAKKYVKL RFEPVRGLEA ICAKFTHESQ RQENHFVEGL LYSLDEAVIM TGVMTDEAEP SKLNSIGNYY KPWFFKHVEN YLKTNREGLE YIPLRHYYHR HTRSIFWELQ DIIPFGNNPI FRYLFGWMVP PKISLLKLTQ GETLRKLYEQ HHVVQDMLVP MKCLQQALHT FQNDIHVYPI WLCPFILPSQ PGLVHPKGNE AELYIDIGAY GEPRVKHFEA RSCMRQLEKF VRSVHGFQML YADCYMNREE FWEMFDGSLY HKLREKLGCC DAFPEVYDKI CKAARH
Characteristics:	Human DHCR24 full-length ORF ( NP_055577.1, 1 a.a. - 516 a.a.) recombinant protein with GST-tag at N-terminal.

## Product Details

---

Purification: in vitro wheat germ expression system

## Target Details

---

Target: Seladin 1 (DHCR24)

Alternative Name: DHCR24 ([DHCR24 Products](#))

Background: Full Gene Name: 24-dehydrocholesterol reductase  
Synonyms: KIAA0018,Nbla03646,SELADIN1,seladin-1

Gene ID: 1718

NCBI Accession: [NM\\_014762](#)

## Application Details

---

Application Notes: Optimal working dilution should be determined by the investigator.

Comment: Preparation method: in vitro, wheat germ expression system  
Product Quality tested by: 12.5% SDS-PAGE Stained with Coomassie Blue.

Restrictions: For Research Use only

## Handling

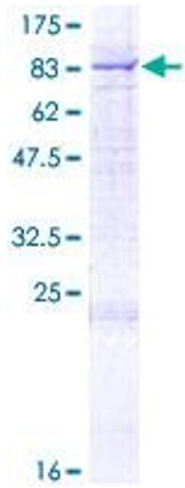
---

Buffer: 50 mM Tris-HCl, 10 mM reduced Glutathione, pH =8.0 in the elution buffer.

Handling Advice: Aliquot to avoid repeated freezing and thawing.

Storage: -80 °C

Storage Comment: Best use within three months from the date of receipt of this protein.



**Image 1.**