



[Go to Product page](#)

Datasheet for ABIN1351549

## DHRS11 Protein (AA 1-181) (GST tag)

### 1 Image

#### Overview

Quantity:	10 µg
Target:	DHRS11
Protein Characteristics:	AA 1-181
Origin:	Human
Source:	Wheat germ
Protein Type:	Recombinant
Purification tag / Conjugate:	This DHRS11 protein is labelled with GST tag.
Application:	ELISA, Western Blotting (WB), Antibody Array (AA), Affinity Purification (AP)

#### Product Details

Purpose:	MGC4172 (Human) Recombinant Protein (P01)
Sequence:	MFSAIRSQHS GVDICINNAG LARPDTLLSG STSGWKDMFN VNVLALSICT REAYQSMKER NVDDGHIINI NSMSGHRVLP LSVTHFYSAT KYAVTALTEG LRQELREAQT HIRATCISPG VVETQFAFKL HDKDPEKAAA TYEQMKCLKP EDVAEAVIYV LSTPAHIQIG DIQMRPTEQV T
Characteristics:	Human MGC4172 full-length ORF ( AAH02731, 1 a.a. - 181 a.a.) recombinant protein with GST-tag at N-terminal.
Purification:	in vitro wheat germ expression system

#### Target Details

Target:	DHRS11
Alternative Name:	DHRS11 ( <a href="#">DHRS11 Products</a> )

## Target Details

Background:	Full Gene Name: dehydrogenase/reductase (SDR family) member 11 Synonyms: ARPG836,FLJ39232,MGC4172,SDR24C1
Gene ID:	79154

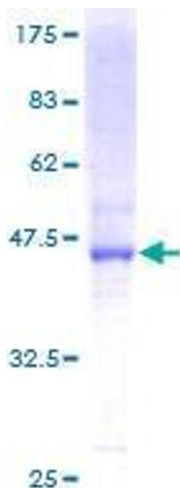
## Application Details

Application Notes:	Optimal working dilution should be determined by the investigator.
Comment:	Preparation method: in vitro, wheat germ expression system Product Quality tested by: 12.5% SDS-PAGE Stained with Coomassie Blue.
Restrictions:	For Research Use only

## Handling

Buffer:	50 mM Tris-HCl, 10 mM reduced Glutathione, pH =8.0 in the elution buffer.
Handling Advice:	Aliquot to avoid repeated freezing and thawing.
Storage:	-80 °C
Storage Comment:	Best use within three months from the date of receipt of this protein.

## Images



**Image 1.**