

Datasheet for ABIN1351555

DHRS2 Protein (AA 229-300) (GST tag)



[Go to Product page](#)

1 Image

Overview

Quantity:	10 µg
Target:	DHRS2
Protein Characteristics:	AA 229-300
Origin:	Human
Source:	Wheat germ
Protein Type:	Recombinant
Purification tag / Conjugate:	This DHRS2 protein is labelled with GST tag.
Application:	ELISA, Western Blotting (WB), Antibody Array (AA), Affinity Purification (AP)

Product Details

Purpose:	DHRS2 (Human) Recombinant Protein (Q01)
Sequence:	GFMGMSLSGR TSRNIISCRG LGSQRTVQES CPSCALQMPA TSTGRTLRLWQ ATPLGSERSG GGCVAVVPGP GA
Characteristics:	Human DHRS2 partial ORF (NP_878912.1, 229 a.a. - 300 a.a.) recombinant protein with GST-tag at N-terminal.
Purification:	in vitro wheat germ expression system

Target Details

Target:	DHRS2
Alternative Name:	DHRS2 (DHRS2 Products)

Target Details

Background:	Full Gene Name: dehydrogenase/reductase (SDR family) member 2 Synonyms: HEP27,SDR25C1
Gene ID:	10202
NCBI Accession:	NM_182908
Pathways:	C21-Steroid Hormone Metabolic Process

Application Details

Application Notes:	Optimal working dilution should be determined by the investigator.
Comment:	Preparation method: in vitro, wheat germ expression system Product Quality tested by: 12.5% SDS-PAGE Stained with Coomassie Blue.
Restrictions:	For Research Use only

Handling

Buffer:	50 mM Tris-HCl, 10 mM reduced Glutathione, pH =8.0 in the elution buffer.
Handling Advice:	Aliquot to avoid repeated freezing and thawing.
Storage:	-80 °C
Storage Comment:	Best use within three months from the date of receipt of this protein.

Images

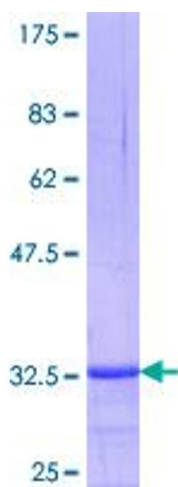


Image 1.