

Datasheet for ABIN1351567  
**DHRXS Protein (AA 1-330) (GST tag)**



[Go to Product page](#)

1 Image

Overview

Quantity:	10 µg
Target:	DHRXS
Protein Characteristics:	AA 1-330
Origin:	Human
Source:	Wheat germ
Protein Type:	Recombinant
Purification tag / Conjugate:	This DHRXS protein is labelled with GST tag.
Application:	ELISA, Western Blotting (WB), Antibody Array (AA), Affinity Purification (AP)

Product Details

Purpose:	DHRXS (Human) Recombinant Protein (P01)
Sequence:	MSPLSAARAA LRVYAVGAAV ILAQLLRRCR GGFLEPVFPP RPDRVAIVTG GTDGIGYSTA KHLARLGMHV IIAGNNDKA KQVVSIIKEE TLNDKVEFLY CDLASMTSIR QFVQKFKMKK IPLHVLINNA GVMMPQRKT RDGFEEHFGL NYLGHFLLTN LLLDTLKESG SPGHSARVVT VSSATHYVAE LNMDDLQSSA CYSPPHAAQA SKLALVLFY HLQRLLAAEG SHVTANVVDP GVVNTDLYKH VFWATRLAKK LLGWLLFKTP DEGAWTSIYA AVTPELEGVG GRYLYNEKET KSLHVTYNQK LQQQLWSKSC EMTGVLDVTL
Characteristics:	Human DHRXS full-length ORF ( NP_660160.1, 1 a.a. - 330 a.a.) recombinant protein with GST-tag at N-terminal.
Purification:	in vitro wheat germ expression system

## Target Details

Target:	DHR SX
Alternative Name:	DHR SX ( <a href="#">DHR SX Products</a> )
Background:	Full Gene Name: dehydrogenase/reductase (SDR family) X-linked Synonyms: CXorf11,DHRS5X,DHRS5Y,DHRSXY,DHR SY,SDR46C1
Gene ID:	207063
NCBI Accession:	<a href="#">NM_145177</a>

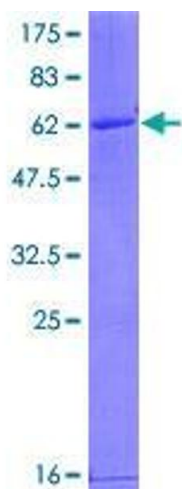
## Application Details

Application Notes:	Optimal working dilution should be determined by the investigator.
Comment:	Preparation method: in vitro, wheat germ expression system Product Quality tested by: 12.5% SDS-PAGE Stained with Coomassie Blue.
Restrictions:	For Research Use only

## Handling

Buffer:	50 mM Tris-HCl, 10 mM reduced Glutathione, pH =8.0 in the elution buffer.
Handling Advice:	Aliquot to avoid repeated freezing and thawing.
Storage:	-80 °C
Storage Comment:	Best use within three months from the date of receipt of this protein.

## Images



**Image 1.**