

Datasheet for ABIN135158

**anti-CD22 antibody**[Go to Product page](#)

1 Image

1 Publication

## Overview

Quantity:	0.5 mg
Target:	CD22
Reactivity:	Mouse
Host:	Rat
Clonality:	Monoclonal
Conjugate:	This CD22 antibody is un-conjugated
Application:	Flow Cytometry (FACS)

## Product Details

Immunogen:	Splenic lymphocyte plasma membranes from CBA x C57 F1 mice
Clone:	2D6
Isotype:	IgG1
Specificity:	Mouse CD22, Mr 150 kDa
Characteristics:	Rat Anti-Mouse CD22-UNLB
Purification:	Purified

## Target Details

Target:	CD22
Alternative Name:	CD22 ( <a href="#">CD22 Products</a> )
Background:	CD22, also known as Lyb-8, is a heterodimeric transmembrane glycoprotein and a member of a

## Target Details

structurally related group of immunoglobulin (Ig) superfamily domain-containing proteins called the sialoadhesin family. It is detected in the cytoplasm early in B cell development (late pro-B cell stage), appears on the cell surface concomitant with IgD, and is found on most IgM+IgD+ mature B lymphocytes. Expression is lost with terminal differentiation of B cells and is absent on plasma cells. Activation of B cells via cross-linking of surface Ig increases CD22 expression. CD22 associates with the B cell receptor (BCR) complex and mediates intercellular adhesion. Its intracellular domain is phosphorylated after antigen receptor cross-linking and is involved in negative regulation of B-cell activation.

## Application Details

Application Notes:	<ul style="list-style-type: none"><li>• <b>Applications:</b> FC - Quality tested , IHC-FS - Reported in literature , IHC-PS - Reported in literature , ICC - Reported in literature , IP - Reported in literature , Activ - Reported in literature</li><li>• <b>Working Dilutions:</b> Flow Cytometry FITC and BIOT conjugates 1 g/106 cells PE, APC, and SPRD conjugates 0.2 g/106 cells For flow cytometry, the suggested use of these reagents is in a final volume of 100 L</li></ul>
--------------------	---

Sample Volume:	1 mL
Restrictions:	For Research Use only

## Handling

Concentration:	0.5 mg/mL
Buffer:	0.5 mg of purified immunoglobulin in 1.0 mL of borate buffered saline, pH 8.2. No preservatives or amine-containing buffer salts added
Preservative:	Without preservative
Handling Advice:	Each reagent is stable for the period shown on the bottle label if stored as directed.
Storage:	4 °C
Storage Comment:	Store at 2-8°C

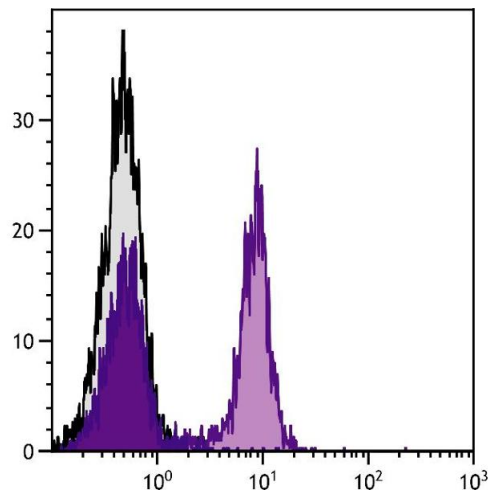
## Publications

Product cited in:	Amorim, Moya, Donnez, Dolmans: "Morphometric characteristics of preantral and antral follicles and expression of factors involved in folliculogenesis in ovaries of adult baboons (Papio anubis)." in: <b>Journal of assisted reproduction and genetics</b> , Vol. 33, Issue 5, pp. 617-626 , (2016) ( <a href="#">PubMed</a> ).
-------------------	--

Törmälä, Jääskeläinen, Lakkakorpi, Liakka, Tapanainen, Vaskivuo: "Zona pellucida components are present in human fetal ovary before follicle formation." in: **Molecular and cellular endocrinology**, Vol. 289, Issue 1-2, pp. 10-5, (2008) ([PubMed](#)).

## Images

---



### Flow Cytometry

**Image 1.** BALB/c mouse splenocytes were stained with Rat Anti-Mouse CD22-UNLB.