

## Datasheet for ABIN1351598 **DIDO1 Protein (GST tag)**



[Go to Product page](#)

### 1 Image

#### Overview

Quantity:	10 µg
Target:	DIDO1
Origin:	Human
Source:	Wheat germ
Protein Type:	Recombinant
Purification tag / Conjugate:	This DIDO1 protein is labelled with GST tag.
Application:	Western Blotting (WB), Antibody Array (AA), Affinity Purification (AP), ELISA

#### Product Details

Purpose:	DIDO1 (Human) Recombinant Protein (P01)
Sequence:	MDDKGDPSNE EAPKAIKPTS KEFRKTWGFR RTTIKREGA GDAEADPLEP PPPQQQLGLS LRRSGRQPKR TERVEQFLTI ARRRGRRSMP VSLEDSGEPT SCPATDAETA SEGSVESASE TRSGPQSAST AVKERPASSE KVKGGDDHDD TSDSDSDGLT LKELQNRLRR KREQEPTER LKGIQSRLRK KRREEGPAET VGSEASDVE GVLPSKQEPE NDQGVVSQAG KDDRESKLEG KAAQDIKDEE PGDLGRPKE CEGYDPNALY CICRQPHNNR FMICCDRCEE WFHGDCVGIS EARGLLERN GEDYICPNCT ILQVQDETHS ETADQAEKW RPDADGTDC TSIGTIEQKS SEDQGIKGR I EKAANPSGKK KLKIFQPVIE APGASKCIGP GCCHVAQPDS VYCSNDCILK HAAATMKFLS SGKEQKPKPK EKMKMKPEKP SLPKCGAQAG IKISSVHKRP APEKKETTVK KAVVVPARSE ALGKEAACES STPSWASDHN YNAVKPEKTA APSPSLLYKC SGKYLKSLHP SLIA
Characteristics:	Human DIDO1 full-length ORF ( AAH00770.1, 1 a.a. - 544 a.a.) recombinant protein with GST-tag at N-terminal.
Purification:	in vitro wheat germ expression system

## Target Details

Target:	DIDO1
Alternative Name:	DIDO1 ( <a href="#">DIDO1 Products</a> )
Background:	Gene: death inducer-obliterator 1 Synonyms: BYE1, C20orf158, DATF1, DIDO2, DIDO3, DIO-1, DIO1, DKFZp434P1115, FLJ11265, KIAA0333, MGC16140, dJ885L7.8
Gene ID:	11083
Pathways:	<a href="#">Hormone Activity</a>

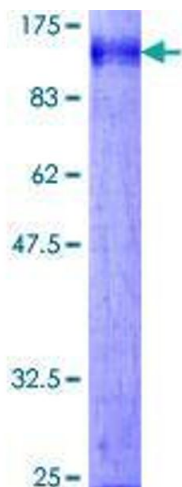
## Application Details

Application Notes:	Optimal working dilution should be determined by the investigator.
Restrictions:	For Research Use only

## Handling

Buffer:	50 mM Tris-HCl, 10 mM reduced Glutathione, pH =8.0 in the elution buffer.
Handling Advice:	Aliquot to avoid repeated freezing and thawing.
Storage:	-80 °C
Storage Comment:	Best use within three months from the date of receipt of this protein.

## Images



**Image 1.**