

Datasheet for ABIN1351647  
**DKK1 Protein (AA 1-266) (GST tag)**



[Go to Product page](#)

1 Image

Overview

Quantity:	10 µg
Target:	DKK1
Protein Characteristics:	AA 1-266
Origin:	Human
Source:	Wheat germ
Protein Type:	Recombinant
Purification tag / Conjugate:	This DKK1 protein is labelled with GST tag.
Application:	Western Blotting (WB), ELISA, Antibody Array (AA), Affinity Purification (AP)

Product Details

Purpose:	DKK1 (Human) Recombinant Protein (P01)
Sequence:	MMALGAAGAT RVSAMVAAA LGGHPLLGSV ATLNSVLNSN AIKNLPPPLG GAAGHPGSAV SAAPGILYPG GNKYQTIDNY QPYPCAEDEE CGTDEYCASP TRGGDAGVQI CLACRKRKR CMRHAMCCPG NYCKNGICVS SDQNHFRGEI EETITESFGN DHSTLDGYSR RTTLSSKMYH TTGQEGSVCL RSSDCASGLC CARHFWSKIC KPVKGGQVC TKHRRKGSYG LEIFQRCYCG EGLScriQKD HHQASNSSRL HTCQRH
Characteristics:	Human DKK1 full-length ORF ( AAH01539.1, 1 a.a. - 266 a.a.) recombinant protein with GST-tag at N-terminal.
Purification:	in vitro wheat germ expression system

## Target Details

Target:	DKK1
Alternative Name:	DKK1 ( <a href="#">DKK1 Products</a> )
Background:	Gene: dickkopf homolog 1 (Xenopus laevis) Synonyms: DKK-1, SK
Gene ID:	22943
Pathways:	<a href="#">WNT Signaling</a> , <a href="#">Regulation of Muscle Cell Differentiation</a> , <a href="#">Positive Regulation of fat Cell Differentiation</a>

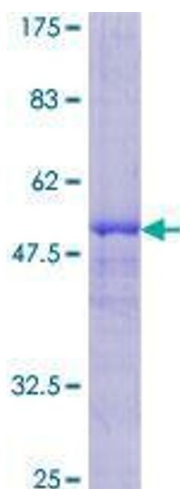
## Application Details

Application Notes:	Optimal working dilution should be determined by the investigator.
Restrictions:	For Research Use only

## Handling

Buffer:	50 mM Tris-HCl, 10 mM reduced Glutathione, pH =8.0 in the elution buffer.
Handling Advice:	Aliquot to avoid repeated freezing and thawing.
Storage:	-80 °C
Storage Comment:	Best use within three months from the date of receipt of this protein.

## Images



**Image 1.**