



[Go to Product page](#)

Datasheet for ABIN1351651

DKK3 Protein (AA 1-350) (GST tag)

1 Image

Overview

Quantity:	10 µg
Target:	DKK3
Protein Characteristics:	AA 1-350
Origin:	Human
Source:	Wheat germ
Protein Type:	Recombinant
Purification tag / Conjugate:	This DKK3 protein is labelled with GST tag.
Application:	Western Blotting (WB), ELISA, Antibody Array (AA), Affinity Purification (AP)

Product Details

Purpose:	DKK3 (Human) Recombinant Protein (P01)
Sequence:	<p>MQRLGATLLC LLLAAVPTA PAPAPTATSA PVKPGPALSYPQEEATLNEM FREVEELMED TQHKLRSAVE EMEAEAAAASSEVNLANL PPSYHNETNT DTKVGNNTIH VHREIHKITN NQTGQMVFSE TVITSVGDEE GRRSHECIID EDCGPSMYCQ FASFQYTCQP CRGQRMLCTR DSECCGDQLC VWGHCTKMAT RGSNGTICDN QRDCQPGLCC AFQRGLLFPV CTPLPVEGEL CHDPASRLLD LITWELEPDG ALDRCPASG LLCQPHSHSL VYVCKPTFVG SRDQDGEILL PREVPDEYEV GSFMEEVQR LEDLERSLTE EMALGEPAAA AAALLGEEI</p>
Characteristics:	Human DKK3 full-length ORF (AAH07660.1, 1 a.a. - 350 a.a.) recombinant protein with GST-tag at N-terminal.
Purification:	in vitro wheat germ expression system

Target Details

Target:	DKK3
Abstract:	DKK3 Products
Background:	Full Gene Name: dickkopf homolog 3 (Xenopus laevis) Synonyms: REIC
Gene ID:	27122

Application Details

Application Notes:	Optimal working dilution should be determined by the investigator.
Comment:	Preparation method: in vitro, wheat germ expression system Product Quality tested by: 12.5% SDS-PAGE Stained with Coomassie Blue.
Restrictions:	For Research Use only

Handling

Buffer:	50 mM Tris-HCl, 10 mM reduced Glutathione, pH =8.0 in the elution buffer.
Handling Advice:	Aliquot to avoid repeated freezing and thawing.
Storage:	-80 °C
Storage Comment:	Best use within three months from the date of receipt of this protein.

Images

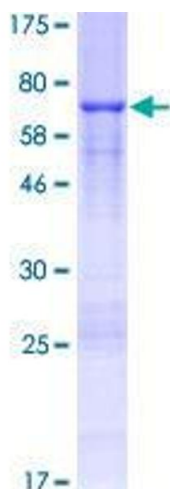


Image 1.