

Datasheet for ABIN1351683
DLK2 Protein (AA 1-383) (GST tag)



[Go to Product page](#)

1 Image

Overview

Quantity:	10 µg
Target:	DLK2
Protein Characteristics:	AA 1-383
Origin:	Human
Source:	Wheat germ
Protein Type:	Recombinant
Purification tag / Conjugate:	This DLK2 protein is labelled with GST tag.
Application:	ELISA, Western Blotting (WB), Antibody Array (AA), Affinity Purification (AP)

Product Details

Purpose:	DLK2 (Human) Recombinant Protein (P01)
Sequence:	MPSGCRCLHL VCLLCILGAP GQPVRADDCS SHCDLAHGCC APDGSCRCDP GWEGLHCERC VRMPGCQHGT CHQPWQCICH SGWAGKFCDK DEHICTTQSP CQNGGQCMYD GGGEYHCVCL PGFHGRDCER KAGPCEQAGS PCRNGGQCQD DQGFALNFTC RCLVGFVGAR CEVNVDDCLM RPCANGATCL DGINRFSLC PEGFAGRFCT INLDDCASRP CQRGARCRDR VHDFDCLCPS GYGGKTCELV LPVPDPPTTV DTPLGPTSAV VVPATGPAPH SAGAGLLRIS VKEVRRRQEA GLGEPSSLVAL VVFGALTAAL VLATVLLTLR AWRRGVCPPG PCCYPAPHYA PACQDQECQV SMLPAGLPLP RDLPEPGKT TAL
Characteristics:	Human DLK2 full-length ORF (NP_076421.2, 1 a.a. - 383 a.a.) recombinant protein with GST-tag at N-terminal.
Purification:	in vitro wheat germ expression system

Target Details

Target:	DLK2
Alternative Name:	DLK2 (DLK2 Products)
Background:	Full Gene Name: delta-like 2 homolog (Drosophila) Synonyms: EGFL9,MGC111055,MGC2487
Gene ID:	65989
NCBI Accession:	NM_023932

Application Details

Application Notes:	Optimal working dilution should be determined by the investigator.
Comment:	Preparation method: in vitro, wheat germ expression system Product Quality tested by: 12.5% SDS-PAGE Stained with Coomassie Blue.
Restrictions:	For Research Use only

Handling

Buffer:	50 mM Tris-HCl, 10 mM reduced Glutathione, pH =8.0 in the elution buffer.
Handling Advice:	Aliquot to avoid repeated freezing and thawing.
Storage:	-80 °C
Storage Comment:	Best use within three months from the date of receipt of this protein.

Images

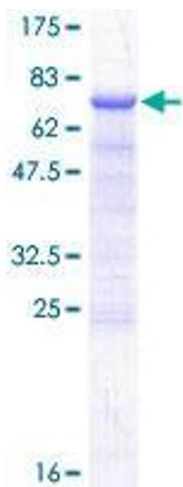


Image 1.