

Datasheet for ABIN1351693
DLX2 Protein (AA 1-328) (GST tag)



[Go to Product page](#)

1 Image

Overview

Quantity:	25 µg
Target:	DLX2
Protein Characteristics:	AA 1-328
Origin:	Human
Source:	Wheat germ
Protein Type:	Recombinant
Purification tag / Conjugate:	This DLX2 protein is labelled with GST tag.
Application:	ELISA, Western Blotting (WB), Antibody Array (AA), Affinity Purification (AP)

Product Details

Purpose:	DLX2 (Human) Recombinant Protein (P01)
Sequence:	MTGVFDSLVA DMHSTQIAAS STYHQHQPP SGGGAGPGGN SSSSSSLHKP QESPTLPVST ATDSSYYTNQ QHPAGGGGGG GSPYAHMGSY QYQASGLNNV PYSAKSSYDL GYTAAYTSYA PYGTSSSPAN NEPEKEDLEP EIRIVNGKPK KVRKPRTIYS SFQLAALQRR FQKTQYLALP ERAELAASLG LTQTQVKIWF QNRRSKFKKM WKSGEIPSEQ HPGASASPPC ASPPVSAPAS WDFGVPQRMA GGGGPGSGGS GAGSSGSSPS SAASAFLGNY PWYHQTSRSA SHLQATAPLL HPTQTPQPHH HHHHHGGGGA PVSAGTIF
Characteristics:	Human DLX2 full-length ORF (AAH32558, 1 a.a. - 328 a.a.) recombinant protein with GST-tag at N-terminal.
Purification:	in vitro wheat germ expression system

Target Details

Target:	DLX2
Alternative Name:	DLX2 (DLX2 Products)
Background:	Full Gene Name: distal-less homeobox 2 Synonyms: TES-1, TES1
Gene ID:	1746

Application Details

Application Notes:	Optimal working dilution should be determined by the investigator.
Comment:	Preparation method: in vitro, wheat germ expression system Product Quality tested by: 12.5% SDS-PAGE Stained with Coomassie Blue.
Restrictions:	For Research Use only

Handling

Buffer:	50 mM Tris-HCl, 10 mM reduced Glutathione, pH =8.0 in the elution buffer.
Handling Advice:	Aliquot to avoid repeated freezing and thawing.
Storage:	-80 °C
Storage Comment:	Best use within three months from the date of receipt of this protein.

Images

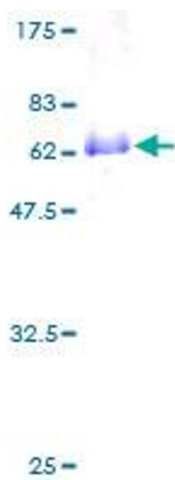


Image 1.