



Datasheet for ABIN1351694

DLX2 Protein (AA 1-124) (GST tag)



[Go to Product page](#)

1 Image

Overview

Quantity:	10 µg
Target:	DLX2
Protein Characteristics:	AA 1-124
Origin:	Human
Source:	Wheat germ
Protein Type:	Recombinant
Purification tag / Conjugate:	This DLX2 protein is labelled with GST tag.
Application:	ELISA, Western Blotting (WB), Antibody Array (AA), Affinity Purification (AP)

Product Details

Purpose:	DLX2 (Human) Recombinant Protein (Q01)
Sequence:	MTGVFDSLVA DMHSTQIAAS STYHQHQPP SGGGAGPGGN SSSSSSLHKP QESPTLPVST ATDSSYYTNQ QHPAGGGGGG GSPYAHMGSY QYQASGLNNV PYSAKSSYDL GYTAAYTSYA PYGT
Characteristics:	Human DLX2 partial ORF (NP_004396, 1 a.a. - 124 a.a.) recombinant protein with GST-tag at N-terminal.
Purification:	in vitro wheat germ expression system

Target Details

Target:	DLX2
Alternative Name:	DLX2 (DLX2 Products)

Target Details

Background: Full Gene Name: distal-less homeobox 2
Synonyms: TES-1, TES1

Gene ID: 1746

NCBI Accession: [NM_004405](#)

Application Details

Application Notes: Optimal working dilution should be determined by the investigator.

Comment: Preparation method: in vitro, wheat germ expression system
Product Quality tested by: 12.5% SDS-PAGE Stained with Coomassie Blue

Restrictions: For Research Use only

Handling

Buffer: 50 mM Tris-HCl, 10 mM reduced Glutathione, pH =8.0 in the elution buffer.

Handling Advice: Aliquot to avoid repeated freezing and thawing.

Storage: -80 °C

Storage Comment: Best use within three months from the date of receipt of this protein.

Images

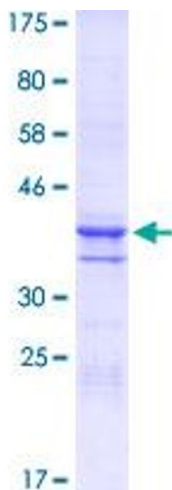


Image 1.