



[Go to Product page](#)

Datasheet for ABIN1351739

## DMWD Protein (AA 1-334) (GST tag)

### 1 Image

#### Overview

Quantity:	10 µg
Target:	DMWD
Protein Characteristics:	AA 1-334
Origin:	Human
Source:	Wheat germ
Protein Type:	Recombinant
Purification tag / Conjugate:	This DMWD protein is labelled with GST tag.
Application:	ELISA, Western Blotting (WB), Antibody Array (AA), Affinity Purification (AP)

#### Product Details

Purpose:	DMWD (Human) Recombinant Protein (P01)
Sequence:	MLLRGLMKSY FGLLCVCWS PDGRYVVTGG EDDLVTVWSF TEGRVVARGH GHKSWVNAVA FDPYTTTRAE AATAAGADGE RSGEEEEEEP EAAGTGSAGG APLSPLPKAG SITYRFGSAG QDTQFCLWDL TEDVLYPHPP LARTRTLPGT PGTTPPAASS SRGGEPGPGP LPRSLRSNS LPHPAGGGKA GGPGVAAEPG TPFSGIRFAT LTLQERRDRG AEKEHKRYHS LGNISRGGSG GSGSGGEKPS GPVPRSRLDP AKVLGTALCP RIHEVPLLEP LVCKKIAQER LTVLLFLEDC IITACQGLI CTWARPGKAG ISSQPGNSPS GTVV
Characteristics:	Human DMWD full-length ORF ( AAH19266.1, 1 a.a. - 334 a.a.) recombinant protein with GST-tag at N-terminal.
Purification:	in vitro wheat germ expression system

## Target Details

Target:	DMWD
Alternative Name:	DMWD ( <a href="#">DMWD Products</a> )
Background:	Full Gene Name: dystrophia myotonica, WD repeat containing Synonyms: D19S593E,DMR-N9,DMRN9,gene59
Gene ID:	1762

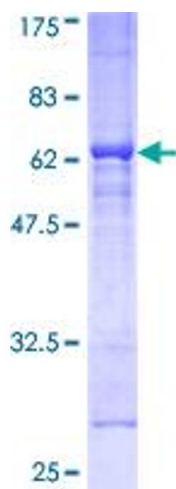
## Application Details

Application Notes:	Optimal working dilution should be determined by the investigator.
Comment:	Preparation method: in vitro, wheat germ expression system Product Quality tested by: 12.5% SDS-PAGE Stained with Coomassie Blue.
Restrictions:	For Research Use only

## Handling

Buffer:	50 mM Tris-HCl, 10 mM reduced Glutathione, pH =8.0 in the elution buffer.
Handling Advice:	Aliquot to avoid repeated freezing and thawing.
Storage:	-80 °C
Storage Comment:	Best use within three months from the date of receipt of this protein.

## Images



**Image 1.**