

Datasheet for ABIN1351821

DNAJC6 Protein (AA 1-913) (GST tag)



[Go to Product page](#)

1 Image

Overview

Quantity:	10 µg
Target:	DNAJC6
Protein Characteristics:	AA 1-913
Origin:	Human
Source:	Wheat germ
Protein Type:	Recombinant
Purification tag / Conjugate:	This DNAJC6 protein is labelled with GST tag.
Application:	ELISA, Western Blotting (WB), Antibody Array (AA), Affinity Purification (AP)

Product Details

Purpose:	DNAJC6 (Human) Recombinant Protein (P01)
Sequence:	<p>MKDSENKGAS SPDMEPSYGG GLFDMVKGGA GRLFSNLKDN LKDTLKDTSS RVIQSVTSYT</p> <p>KGDLDFTYVT SRIIVMSFPL DNVDIGFRNQ VDDIRSFLDS RHLDHYTVYN LSPKSYRTAK</p> <p>FHSRVSECSW PIRQAPSLHN LFAVCRNMYN WLLQNPKNVC VVHCLDGRAA SSILVGAMFI</p> <p>FCNLYSTPGP AIRLLYAKRP GIGLSPSHRR YLGYMCDLLA DKPYRPHFKP LTIKSITVSP</p> <p>IPFFNKQRNG CRPYCDVLIG ETKIYSTCTD FERMKEYRVQ DGKIFIPLNI TVQGDVVVSM</p> <p>YHLRSTIGSR LQAKVTNTQI FQLQFHTGFI PLDTTVLKFT KPELDACDVP EKYPQLFQVT</p> <p>LDVELQPHDK VIDLTPPWEH YCTKDVNPSI LFSSHQEHQD TLALGGQAPI DIPPDNPRHY</p> <p>GQSGFFASLC WQDQKSEKSF CEEDHAALVN QESEQSDEL LTLSSPHGNA NGDKPHGVKK</p> <p>PSKKQQEPAA PPPPEDVDLL GLEGSAMSNS FSPPAAPPTN SELLSDFGG GGAAGPTQAG</p> <p>QSGVEDVFHP SGPASTQSTP RRSATSTSAS PTLRVGEGAT FDPFGAPSKP SGQDLLGSFL</p> <p>NTSSASSDPF LQPTRSPSPT VHASSTPAVN IQPDVSGGWD WHAKPGGFGM GSKSAATSPT</p>

Product Details

GSSHGTPTHQ SKPQTLDPFA DLGTLGSSSF ASKPTTPTGL GGGFPPLSSP QKASPQPMGG
GWQQGGAYNW QQPQPKPQPS MPHSSPQNRN NYNVSFSSAMP GGQNERGKGS SNLEGKQKAA
DFEDLLSGQG FNAHKDKKGP RTIAEMRKEE MAKEMDPEKL KILEWIEGKE RNIRALLSTM
HTVLWAGETK WKPVGMADLV TPEQVKKVYR KAVLVVHPDK ATGQPYEQYA KMIFMELNDA
WSEFENQGQK PLY

Characteristics: Human DNAJC6 full-length ORF (NP_055602.1, 1 a.a. - 913 a.a.) recombinant protein with GST-tag at N-terminal.

Purification: in vitro wheat germ expression system

Target Details

Target: DNAJC6

Alternative Name: DNAJC6 ([DNAJC6 Products](#))

Background: Full Gene Name: DnaJ (Hsp40) homolog, subfamily C, member 6
Synonyms: DJC6,KIAA0473,MGC129914,MGC129915,MGC48436

Gene ID: 9829

NCBI Accession: [NM_014787](#)

Application Details

Application Notes: Optimal working dilution should be determined by the investigator.

Comment: Preparation method: in vitro, wheat germ expression system
Product Quality tested by: 12.5% SDS-PAGE Stained with Coomassie Blue.

Restrictions: For Research Use only

Handling

Buffer: 50 mM Tris-HCl, 10 mM reduced Glutathione, pH =8.0 in the elution buffer.

Handling Advice: Aliquot to avoid repeated freezing and thawing.

Storage: -80 °C

Storage Comment: Best use within three months from the date of receipt of this protein.

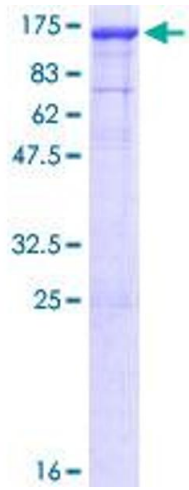


Image 1.