



[Go to Product page](#)

Datasheet for ABIN1351836

## DNASEX Protein (AA 18-302) (GST tag)

### 1 Image

#### Overview

Quantity:	10 µg
Target:	DNASEX
Protein Characteristics:	AA 18-302
Origin:	Human
Source:	Wheat germ
Protein Type:	Recombinant
Purification tag / Conjugate:	This DNASEX protein is labelled with GST tag.
Application:	Western Blotting (WB), ELISA, Antibody Array (AA), Affinity Purification (AP)

#### Product Details

Purpose:	DNASE1L1 (Human) Recombinant Protein (P01)
Sequence:	AFRICAFAAQ RLTLAKVARE QVMDTLVRIL ARCDIMVLQE VVDSSGSAIP LLLRELNRFD GSGPYSTLSS PQLGRSTYME TYVYFYRSHK TQVLSSYVYN DEDDVFAREP FVAQFSLPSN VLPSLVLVPL HTTPKAVEKE LNALYDVFLE VSQHWQSKDV ILLGDFNADC ASLTKKRLDK LELRTEPGFH WVIADGEDTT VRASTHCTYD RVVLHGERCR SLLHTAAAFD FPTSFQLTEE EALNISDHYP VEVELKLSQA HSVQPLSLTV LLLL SLLSPQ LCPAA
Characteristics:	Human DNASE1L1 full-length ORF ( AAH01561, 18 a.a. - 302 a.a.) recombinant protein with GST-tag at N-terminal.
Purification:	in vitro wheat germ expression system

## Target Details

Target:	DNASEX
Alternative Name:	DNASE1L1 ( <a href="#">DNASEX Products</a> )
Background:	Full Gene Name: deoxyribonuclease I-like 1 Synonyms: DNAS1L1, DNASEX, DNL1L, XIB
Gene ID:	1774

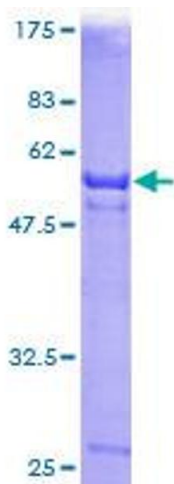
## Application Details

Application Notes:	Optimal working dilution should be determined by the investigator.
Comment:	Preparation method: in vitro, wheat germ expression system Product Quality tested by: 12.5% SDS-PAGE Stained with Coomassie Blue.
Restrictions:	For Research Use only

## Handling

Buffer:	50 mM Tris-HCl, 10 mM reduced Glutathione, pH =8.0 in the elution buffer.
Handling Advice:	Aliquot to avoid repeated freezing and thawing.
Storage:	-80 °C
Storage Comment:	Best use within three months from the date of receipt of this protein.

## Images



**Image 1.**