

Datasheet for ABIN1351838
DNASE1L3 Protein (AA 1-305) (GST tag)



[Go to Product page](#)

1 Image

Overview

Quantity:	10 µg
Target:	DNASE1L3
Protein Characteristics:	AA 1-305
Origin:	Human
Source:	Wheat germ
Protein Type:	Recombinant
Purification tag / Conjugate:	This DNASE1L3 protein is labelled with GST tag.
Application:	Western Blotting (WB), ELISA, Antibody Array (AA), Affinity Purification (AP)

Product Details

Purpose:	DNASE1L3 (Human) Recombinant Protein (P01)
Sequence:	MSRELAPLLL LLLSIHSALA MRICSFNVRS FGESKQEDKN AMDVIVKVIK RCDIILVMEI KDSNNRICPI LMEKLNRRNSR RGITYNYVIS SRLGRNTYKE QYAFLYKEKL VSVKRSYHYH DYQDGDADVF SREPFVWFQ SPHTAVKDFV IIPLHTTPET SVKEIDELVE VYTDVKHRWK AENFIFMGDF NAGCSYVPPK AWKNIRLRTD PRFVWLIGDQ EDTTVKSTN CAYDRIVLRG QEIVSSVVPK SNSVDFDQKA YKLTEEEALD VSDHFPVEFK LQSSRAFTNS KKSRTLKKT KSKRS
Characteristics:	Human DNASE1L3 full-length ORF (NP_004935.1, 1 a.a. - 305 a.a.) recombinant protein with GST-tag at N-terminal.
Purification:	in vitro wheat germ expression system

Target Details

Target:	DNASE1L3
Alternative Name:	DNASE1L3 (DNASE1L3 Products)
Background:	Gene: deoxyribonuclease I-like 3 Synonyms: DHP2, DNAS1L3, LSD
Gene ID:	1776
NCBI Accession:	NM_004944

Application Details

Application Notes:	Optimal working dilution should be determined by the investigator.
Restrictions:	For Research Use only

Handling

Buffer:	50 mM Tris-HCl, 10 mM reduced Glutathione, pH =8.0 in the elution buffer.
Handling Advice:	Aliquot to avoid repeated freezing and thawing.
Storage:	-80 °C
Storage Comment:	Best use within three months from the date of receipt of this protein.

Images

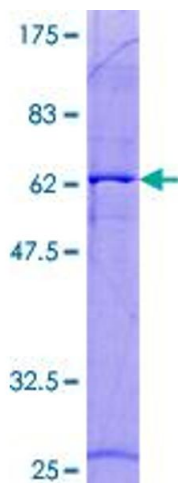


Image 1.