

Datasheet for ABIN1351846
DNASE2 Protein (AA 261-360) (GST tag)



[Go to Product page](#)

1 Image

Overview

Quantity:	10 µg
Target:	DNASE2
Protein Characteristics:	AA 261-360
Origin:	Human
Source:	Wheat germ
Protein Type:	Recombinant
Purification tag / Conjugate:	This DNASE2 protein is labelled with GST tag.
Application:	ELISA, Western Blotting (WB), Antibody Array (AA), Affinity Purification (AP)

Product Details

Purpose:	DNASE2 (Human) Recombinant Protein (Q01)
Sequence:	GILPSNCSDI WQVLNVNQIA FPGPAGPSFN STEDHSKWCV SPKGPWTCVG DMNRNQGEEQ RGGGTLCAQL PALWKAFQPL VKNYQPCNGM ARKPSRAYKI
Characteristics:	Human DNASE2 partial ORF (NP_001366, 261 a.a. - 360 a.a.) recombinant protein with GST-tag at N-terminal.
Purification:	in vitro wheat germ expression system

Target Details

Target:	DNASE2
Alternative Name:	DNASE2 (DNASE2 Products)

Target Details

Background: Full Gene Name: deoxyribonuclease II, lysosomal
Synonyms: DNASE2A,DNL,DNL2

Gene ID: 1777

NCBI Accession: [NM_001375](#)

Application Details

Application Notes: Optimal working dilution should be determined by the investigator.

Comment: Preparation method: in vitro, wheat germ expression system
Product Quality tested by: 12.5% SDS-PAGE Stained with Coomassie Blue.

Restrictions: For Research Use only

Handling

Buffer: 50 mM Tris-HCl, 10 mM reduced Glutathione, pH =8.0 in the elution buffer.

Handling Advice: Aliquot to avoid repeated freezing and thawing.

Storage: -80 °C

Storage Comment: Best use within three months from the date of receipt of this protein.

Images

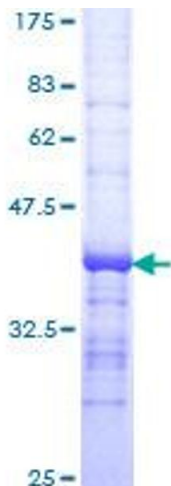


Image 1.