

Datasheet for ABIN1351885
DOCK1 Protein (AA 1-152) (GST tag)



[Go to Product page](#)

1 Image

Overview

Quantity:	10 µg
Target:	DOCK1
Protein Characteristics:	AA 1-152
Origin:	Human
Source:	Wheat germ
Protein Type:	Recombinant
Purification tag / Conjugate:	This DOCK1 protein is labelled with GST tag.
Application:	Western Blotting (WB), ELISA, Antibody Array (AA), Affinity Purification (AP)

Product Details

Purpose:	DOCK1 (Human) Recombinant Protein (P01)
Sequence:	MRIGRQSKI HNYAINNGLF FKCMISPPSG DVRNDIYVTL VQGDFDKGSK TTAKNVEVTV SVYDEDGKRL EHVIFPGAGD EAISEYKSVI YYQVKQPRWF ETVKVLFTWS FYHMALIMKC SFVTQGNILT SSSARELLQA GRVSPNKVIQ GC
Characteristics:	Human DOCK1 full-length ORF (AAH84559.1, 1 a.a. - 152 a.a.) recombinant protein with GST-tag at N-terminal.
Purification:	in vitro wheat germ expression system

Target Details

Target:	DOCK1
Alternative Name:	DOCK1 (DOCK1 Products)

Target Details

Background:	Full Gene Name: dedicator of cytokinesis 1 Synonyms: DOCK180,ced5
Gene ID:	1793
Pathways:	Signaling of Hepatocyte Growth Factor Receptor

Application Details

Application Notes:	Optimal working dilution should be determined by the investigator.
Comment:	Preparation method: in vitro, wheat germ expression system Product Quality tested by: 12.5% SDS-PAGE Stained with Coomassie Blue.
Restrictions:	For Research Use only

Handling

Buffer:	50 mM Tris-HCl, 10 mM reduced Glutathione, pH =8.0 in the elution buffer.
Handling Advice:	Aliquot to avoid repeated freezing and thawing.
Storage:	-80 °C
Storage Comment:	Best use within three months from the date of receipt of this protein.

Images

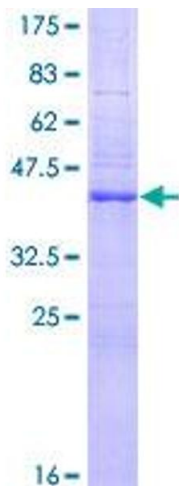


Image 1.