



[Go to Product page](#)

Datasheet for ABIN1351890

## DOCK2 Protein (AA 1-336) (GST tag)

### 1 Image

#### Overview

Quantity:	10 µg
Target:	DOCK2
Protein Characteristics:	AA 1-336
Origin:	Human
Source:	Wheat germ
Protein Type:	Recombinant
Purification tag / Conjugate:	This DOCK2 protein is labelled with GST tag.
Application:	Western Blotting (WB), Antibody Array (AA), Affinity Purification (AP), ELISA

#### Product Details

Purpose:	DOCK2 (Human) Recombinant Protein (P01)
Sequence:	MCVCAEDGKT LPVAVPIEDM QRIHLRFMFR HRSSLESKDK GEKNFAMSYV KLMKEDGTTL HDGFHDLVVL KGDSKKMEDA SAYLTLPSYR HHVENKGATL SRSSSSVGGGL SVSSRDVFSI STLVCSTKLT QNVGLLGLLK WRMKPQLEES MRRLFESINN LMKSQYKTTI LLQVAALKYI PSVLHDVEMV FDAKLLSQLL YEFYTCIPPV KLQKQKVQSM NEIVQSNLFK KQECRDILLP VITKELKELL EQKDDMQHQV LERKYCVELL NSILEVLSYQ DAAFTYHHIQ EIMVQLLRTV NRTVITMGRD HILIGACCNC GFPSSTPHSL IQWLWG
Characteristics:	Human DOCK2 full-length ORF ( AAH16996, 1 a.a. - 336 a.a.) recombinant protein with GST-tag at N-terminal.
Purification:	in vitro wheat germ expression system

## Target Details

Target:	DOCK2
Alternative Name:	DOCK2 ( <a href="#">DOCK2 Products</a> )
Background:	Full Gene Name: dedicator of cytokinesis 2 Synonyms: FLJ46592,KIAA0209
Gene ID:	1794

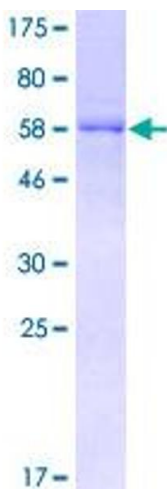
## Application Details

Application Notes:	Optimal working dilution should be determined by the investigator.
Comment:	Preparation method: in vitro, wheat germ expression system Product Quality tested by: 12.5% SDS-PAGE Stained with Coomassie Blue.
Restrictions:	For Research Use only

## Handling

Buffer:	50 mM Tris-HCl, 10 mM reduced Glutathione, pH =8.0 in the elution buffer.
Handling Advice:	Aliquot to avoid repeated freezing and thawing.
Storage:	-80 °C
Storage Comment:	Best use within three months from the date of receipt of this protein.

## Images



**Image 1.**