

Datasheet for ABIN1351892

DOCK4 Protein (AA 1867-1966) (GST tag)



[Go to Product page](#)

1 Image

Overview

Quantity:	10 µg
Target:	DOCK4
Protein Characteristics:	AA 1867-1966
Origin:	Human
Source:	Wheat germ
Protein Type:	Recombinant
Purification tag / Conjugate:	This DOCK4 protein is labelled with GST tag.
Application:	Western Blotting (WB), Antibody Array (AA), Affinity Purification (AP), ELISA

Product Details

Purpose:	DOCK4 (Human) Recombinant Protein (Q01)
Sequence:	NQVNEQSAPL PVPVPPVPS YGGEEPVRKE SKTPPPYSVY ERTLRRPVPL PHLSIPVTS EPPALPPKPL AARSSHLENG ARRTDPGPRP RPLPRKVSQI
Characteristics:	Human DOCK4 partial ORF (NP_055520, 1867 a.a. - 1966 a.a.) recombinant protein with GST-tag at N-terminal.
Purification:	in vitro wheat germ expression system

Target Details

Target:	DOCK4
Alternative Name:	DOCK4 (DOCK4 Products)

Target Details

Background:	Full Gene Name: dedicator of cytokinesis 4 Synonyms: FLJ34238,KIAA0716,MGC134911,MGC134912
Gene ID:	9732
NCBI Accession:	NM_014705

Application Details

Application Notes:	Optimal working dilution should be determined by the investigator.
Comment:	Preparation method: in vitro, wheat germ expression system Product Quality tested by: 12.5% SDS-PAGE Stained with Coomassie Blue.
Restrictions:	For Research Use only

Handling

Buffer:	50 mM Tris-HCl, 10 mM reduced Glutathione, pH =8.0 in the elution buffer.
Handling Advice:	Aliquot to avoid repeated freezing and thawing.
Storage:	-80 °C
Storage Comment:	Best use within three months from the date of receipt of this protein.

Images

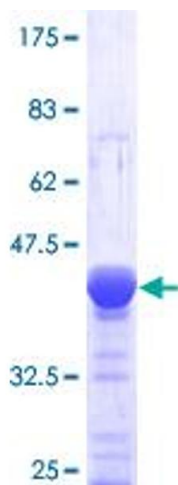


Image 1.