



[Go to Product page](#)

Datasheet for ABIN1351905

## DOK4 Protein (AA 1-326) (GST tag)

### 1 Image

#### Overview

Quantity:	25 µg
Target:	DOK4
Protein Characteristics:	AA 1-326
Origin:	Human
Source:	Wheat germ
Protein Type:	Recombinant
Purification tag / Conjugate:	This DOK4 protein is labelled with GST tag.
Application:	ELISA, Western Blotting (WB), Antibody Array (AA), Affinity Purification (AP)

#### Product Details

Purpose:	DOK4 (Human) Recombinant Protein (P01)
Sequence:	MATNFSDIVK QGYVKMKSrk LGIYRRCWLV FRKSSSKGPQ RLEKYPDEKS VCLRGCPKVT EISNVKCVTR LPKETKRQAV AIIFTDD SAR TFTCDSELEA EEWYKTL SVE CLGSRLNDIS LGEPDLLAPG VQCEQTDRFN VFLLPCPNLD VYGECKLQIT HENIYLWDIH NPRVKLVSWP LCSLRRYGRD ATRFTFEAGR MCDAGEGLYT FQTQEGEQIY QRVHSATLAI AEQHKRVLLE MEKNVRLLNK GTEHYSYPCT PTTMLPRSAY WHHITGSQNI AEASSYAGEG YGAAQASSET DLLNRFILLK PKPSQGDSSE AKTPSQ
Characteristics:	Human DOK4 full-length ORF ( NP_060580.2, 1 a.a. - 326 a.a.) recombinant protein with GST-tag at N-terminal.
Purification:	in vitro wheat germ expression system

## Target Details

Target:	DOK4
Alternative Name:	DOK4 ( <a href="#">DOK4 Products</a> )
Background:	Full Gene Name: docking protein 4 Synonyms: FLJ10488
Gene ID:	55715
NCBI Accession:	<a href="#">NM_018110</a>

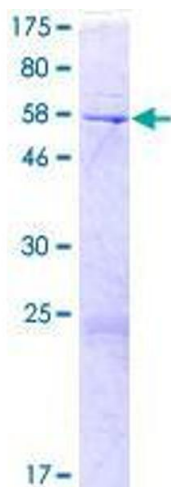
## Application Details

Application Notes:	Optimal working dilution should be determined by the investigator.
Comment:	Preparation method: in vitro, wheat germ expression system Product Quality tested by: 12.5% SDS-PAGE Stained with Coomassie Blue.
Restrictions:	For Research Use only

## Handling

Buffer:	50 mM Tris-HCl, 10 mM reduced Glutathione, pH =8.0 in the elution buffer.
Handling Advice:	Aliquot to avoid repeated freezing and thawing.
Storage:	-80 °C
Storage Comment:	Best use within three months from the date of receipt of this protein.

## Images



**Image 1.**