



[Go to Product page](#)

Datasheet for ABIN1351906

DOK5 Protein (AA 1-306) (GST tag)

1 Image

Overview

Quantity:	25 µg
Target:	DOK5
Protein Characteristics:	AA 1-306
Origin:	Human
Source:	Wheat germ
Protein Type:	Recombinant
Purification tag / Conjugate:	This DOK5 protein is labelled with GST tag.
Application:	ELISA, Western Blotting (WB), Antibody Array (AA), Affinity Purification (AP)

Product Details

Purpose:	DOK5 (Human) Recombinant Protein (P01)
Sequence:	MASNFNDIVK QGYVRIRSRR LGIYQRCWL V FKKASSKGPK RLEKFSDERA AYFRCYHKVT ELNNVKNVAR LPKSTKKHAI GIYFNDDTSK TFACESDLEA DEWCKVLQME CVGTRINDIS LGEPDLLATG VEREQSERFN VYLMPSPLND VHGEALQIT YEYICLWDVQ NPRVKLISWP LSALRRYGRD TTWFTFEAGR MCETGEGFLI FQTRDGEAIY QKVHSAALAI AEQHERLLQS VKNSMLQMKM SERAASLSTM VPLPR SAYWQ HITRQHSTGQ LYRLQDVSSP LKLHRTETFP AYRSEH
Characteristics:	Human DOK5 full-length ORF (NP_060901.2, 1 a.a. - 306 a.a.) recombinant protein with GST-tag at N-terminal.
Purification:	in vitro wheat germ expression system

Target Details

Target:	DOK5
Alternative Name:	DOK5 (DOK5 Products)
Background:	Full Gene Name: docking protein 5 Synonyms: C20orf180,MGC16926
Gene ID:	55816
NCBI Accession:	NM_018431

Application Details

Application Notes:	Optimal working dilution should be determined by the investigator.
Comment:	Preparation method: in vitro, wheat germ expression system Product Quality tested by: 12.5% SDS-PAGE Stained with Coomassie Blue.
Restrictions:	For Research Use only

Handling

Buffer:	50 mM Tris-HCl, 10 mM reduced Glutathione, pH =8.0 in the elution buffer.
Handling Advice:	Aliquot to avoid repeated freezing and thawing.
Storage:	-80 °C
Storage Comment:	Best use within three months from the date of receipt of this protein.

Images

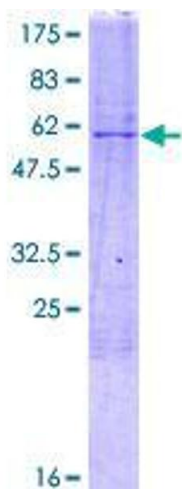


Image 1.