

Datasheet for ABIN1351930
DPH1 Protein (AA 216-324) (GST tag)



[Go to Product page](#)

1 Image

Overview

Quantity:	10 µg
Target:	DPH1
Protein Characteristics:	AA 216-324
Origin:	Human
Source:	Wheat germ
Protein Type:	Recombinant
Purification tag / Conjugate:	This DPH1 protein is labelled with GST tag.
Application:	ELISA, Western Blotting (WB), Antibody Array (AA), Affinity Purification (AP)

Product Details

Purpose:	DPH1 (Human) Recombinant Protein (Q01)
Sequence:	ILGCTSPRLS KEVEAVVYLG DGRFHLESVM IANPNVPAYR YDPYSKVLRS EHYDHQRMQA ARQEAIATAR SAKSWGLILG TLGRQGSPKI LEHLESRLRA LGLSFVRL
Characteristics:	Human DPH1 partial ORF (NP_001374, 216 a.a. - 324 a.a.) recombinant protein with GST-tag at N-terminal.
Purification:	in vitro wheat germ expression system

Target Details

Target:	DPH1
Alternative Name:	DPH1 (DPH1 Products)

Target Details

Background:	Full Gene Name: DPH1 homolog (<i>S. cerevisiae</i>) Synonyms: DPH2L,DPH2L1,FLJ33211,OVCA1
Gene ID:	1801
NCBI Accession:	NM_001383

Application Details

Application Notes:	Optimal working dilution should be determined by the investigator.
Comment:	Preparation method: in vitro, wheat germ expression system Product Quality tested by: 12.5% SDS-PAGE Stained with Coomassie Blue.
Restrictions:	For Research Use only

Handling

Buffer:	50 mM Tris-HCl, 10 mM reduced Glutathione, pH =8.0 in the elution buffer.
Handling Advice:	Aliquot to avoid repeated freezing and thawing.
Storage:	-80 °C
Storage Comment:	Best use within three months from the date of receipt of this protein.

Images

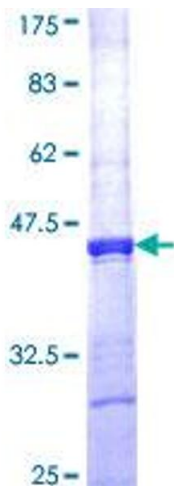


Image 1.