



[Go to Product page](#)

Datasheet for ABIN1351967

DPPA2 Protein (AA 1-298) (GST tag)

1 Image

Overview

Quantity:	10 µg
Target:	DPPA2
Protein Characteristics:	AA 1-298
Origin:	Human
Source:	Wheat germ
Protein Type:	Recombinant
Purification tag / Conjugate:	This DPPA2 protein is labelled with GST tag.
Application:	ELISA, Western Blotting (WB), Antibody Array (AA), Affinity Purification (AP)

Product Details

Purpose:	DPPA2 (Human) Recombinant Protein (P01)
Sequence:	MSDANLDSSK KNFLEGEVDD EESVILTLVP VKDDANMEQM EPSVSSTSDV KLEKPKKYNP GHLLQTNEQF TAPQKARCKI PALPLPTILP PINKVCRDTL RDWCQQLGLS TNGKKIEVYL RLHRHAYPEQ RQDMPEMSQE TRLQRCRKR KAVTKRARLQ RSYEMNERAE ETNTVEVITS APGAMLASWA RIAARAVQPK ALNSCSIPVS VEAFLMQASG VRWCVVHGRL LSADTKGWVR LQFHAGQAWV PTTHRRMISL FLLPACIFPS PGIEDNMLCP DCAKRNKMM KRLMTVEK
Characteristics:	Human DPPA2 full-length ORF (AAH18070.1, 1 a.a. - 298 a.a.) recombinant protein with GST-tag at N-terminal.
Purification:	in vitro wheat germ expression system

Target Details

Target:	DPPA2
Alternative Name:	DPPA2 (DPPA2 Products)
Background:	Full Gene Name: developmental pluripotency associated 2 Synonyms: PESCRG1
Gene ID:	151871
Pathways:	Stem Cell Maintenance

Application Details

Application Notes:	Optimal working dilution should be determined by the investigator.
Comment:	Preparation method: in vitro, wheat germ expression system Product Quality tested by: 12.5% SDS-PAGE Stained with Coomassie Blue.
Restrictions:	For Research Use only

Handling

Buffer:	50 mM Tris-HCl, 10 mM reduced Glutathione, pH =8.0 in the elution buffer.
Handling Advice:	Aliquot to avoid repeated freezing and thawing.
Storage:	-80 °C
Storage Comment:	Best use within three months from the date of receipt of this protein.

Images

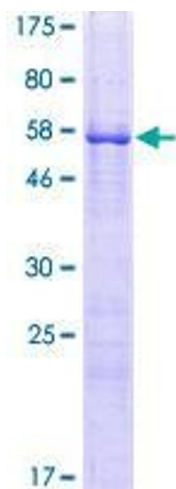


Image 1.