



[Go to Product page](#)

Datasheet for ABIN1352014

DRG2 Protein (AA 1-364) (GST tag)

1 Image

Overview

Quantity:	10 µg
Target:	DRG2
Protein Characteristics:	AA 1-364
Origin:	Human
Source:	Wheat germ
Protein Type:	Recombinant
Purification tag / Conjugate:	This DRG2 protein is labelled with GST tag.
Application:	ELISA, Western Blotting (WB), Antibody Array (AA), Affinity Purification (AP)

Product Details

Purpose:	DRG2 (Human) Recombinant Protein (P01)
Sequence:	MGILEKISEI EKEIARTQKN KATEYHLGLL KAKLAKYRAQ LLEPSKSASS KEGGFDVMKS GDARVALIGF PSVGKSTFLS LMTSTASEAA SYEFTTLTCI PGVIEYKGAN IQLLDLPGII EGAAQGGKGRG RQVIAVARTA DVIIMMLDAT KGEVQRSLLE KELESVGIRL NKHKPNIIYFK PKKGGGISFN STVMLTQCSE KLVQLLHEY KIFNAEVLFR EDCSPDEFID VIVGNRVYMP CLYVYNKIDQ ISMEEVDRLA RKPNSVVISG GMKLNLDYLL EMLWEYLALT CIYTKKRGQR PDFTDAILR KGASVEHVCH RIHRSLASQF KYALVWGTST KYSPQRVGLT HTMEHEDVIQ IVKK
Characteristics:	Human DRG2 full-length ORF (AAH00493, 1 a.a. - 364 a.a.) recombinant protein with GST-tag at N-terminal.
Purification:	in vitro wheat germ expression system

Target Details

Target:	DRG2
Alternative Name:	DRG2 (DRG2 Products)
Background:	Full Gene Name: developmentally regulated GTP binding protein 2 Synonyms:
Gene ID:	1819

Application Details

Application Notes:	Optimal working dilution should be determined by the investigator.
Comment:	Preparation method: in vitro, wheat germ expression system Product Quality tested by: 12.5% SDS-PAGE Stained with Coomassie Blue.
Restrictions:	For Research Use only

Handling

Buffer:	50 mM Tris-HCl, 10 mM reduced Glutathione, pH =8.0 in the elution buffer.
Handling Advice:	Aliquot to avoid repeated freezing and thawing.
Storage:	-80 °C
Storage Comment:	Best use within three months from the date of receipt of this protein.

Images

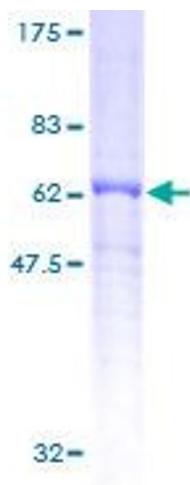


Image 1.