



[Go to Product page](#)

Datasheet for ABIN1352028

## DSCC1 Protein (AA 1-393) (GST tag)

### 1 Image

#### Overview

Quantity:	25 µg
Target:	DSCC1
Protein Characteristics:	AA 1-393
Origin:	Human
Source:	Wheat germ
Protein Type:	Recombinant
Purification tag / Conjugate:	This DSCC1 protein is labelled with GST tag.
Application:	ELISA, Western Blotting (WB), Antibody Array (AA), Affinity Purification (AP)

#### Product Details

Purpose:	DCC1 (Human) Recombinant Protein (P01)
Sequence:	MKRTRDEVDA TLQIAKLNAE ELLPAVHCLG FGPGASGAAA GDFCLLELEP TLCQQLEDGH SLVIRGDKDE QAVLCSKDKT YDLKIADTSN MLLFIPGCKT PDQLKKEDSH CNIHTEIFG FSNNYWELRR RRPKLLKLLK LLMENPYEGP DSQKEKDSNS SKYTTEDLLD QIQASEEIM TQLQVLNACK IGGYWRILEF DYEMKLLNHV TQLVDSESW SFGKVPLNTCL QELGPLEPEE MIEHCLKCYG KKYVDEGEVY FELDADKICR AAARMLLQNA VKFNLAEFQE VWQQSVPEGM VTSLDQLKGL ALVDRHSRPE IIFLLKVDDL PEDNQERFNS LFSREKWTE EDIAPYIQDL CGEKQTIGAL LTKYSRSMQ NGVKVYNSRR PIS
Characteristics:	Human DCC1 full-length ORF ( AAH01316, 1 a.a. - 393 a.a.) recombinant protein with GST-tag at N-terminal.
Purification:	in vitro wheat germ expression system

## Target Details

Target:	DSCC1
Alternative Name:	DSCC1 ( <a href="#">DSCC1 Products</a> )
Background:	Full Gene Name: defective in sister chromatid cohesion 1 homolog ( <i>S. cerevisiae</i> ) Synonyms: DCC1,MGC5528,hDCC1
Gene ID:	79075

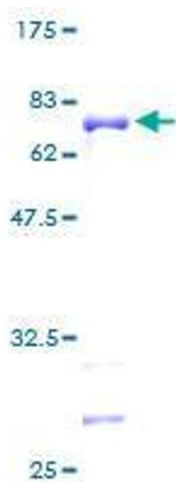
## Application Details

Application Notes:	Optimal working dilution should be determined by the investigator.
Comment:	Preparation method: in vitro, wheat germ expression system Product Quality tested by: 12.5% SDS-PAGE Stained with Coomassie Blue.
Restrictions:	For Research Use only

## Handling

Buffer:	50 mM Tris-HCl, 10 mM reduced Glutathione, pH =8.0 in the elution buffer.
Handling Advice:	Aliquot to avoid repeated freezing and thawing.
Storage:	-80 °C
Storage Comment:	Best use within three months from the date of receipt of this protein.

## Images



**Image 1.**