

Datasheet for ABIN1352033  
**DSE Protein (AA 1-958) (GST tag)**



[Go to Product page](#)

1 Image

Overview

Quantity:	25 µg
Target:	DSE
Protein Characteristics:	AA 1-958
Origin:	Human
Source:	Wheat germ
Protein Type:	Recombinant
Purification tag / Conjugate:	This DSE protein is labelled with GST tag.
Application:	Western Blotting (WB), ELISA, Antibody Array (AA), Affinity Purification (AP)

Product Details

Purpose:	DSE (Human) Recombinant Protein (P01)
Sequence:	<p>MRTHTRGAPS VFFIYLLCFV SAYITDENPE VMIPFTNANY DSHPMPLYFSR AEVAELQLRA ASSHEHIAAR LTEAVHTMLS SPLEYLPPWD PKDYSARWNE IFGNNLGALA MFCVLYPENI EARDMAKDYM ERMAAQPSWL VKDAPWDEVP LAHSLVGFAT AYDFLYNYLS KTQQEKFLEV IANASGYMYE TSYRRGWGFQ YLHNHQPTNC MALLTGSLVL MNQGYLQEAY LWTKQVLTIM EKSLVLLREV TDGSLYEGVA YGSYTTTSLF QYMFLVQRHF NINHFGHPWL KQHFAFMYRT ILPGFQRTVA IADSNYNWFY GPESQLVFLD KFVMRNGSGN WLADQIRNR VVEGPGTPSK GQRWCTLHTE FLWYDGSLKS VPPPDFGTPT LHYFEDWGVV TYGSALPAEI NRSFLSFKSG KLGGRAIYDI VHRNKYKDWI KGWRNFNAGH EHPDQNSFTF APNGVPFITE ALYGPKYTF NNVLMFSPAV SKSCFSPWVG QVTEDCSSKW SKYKHDLAAS CQGRVVAEE KNGVVFIRGE GVGAYNPQLN LKNVQRNLIL LHPQLLLLVD QIHLGEESPL ETAASFFHNV DVPFEETVVD GVHGAFIRQR DGLYKMYWMD DTGYSEKATF ASVTYPRGYP YNGTNYVNVNT MHLRSPITRA</p>

## Product Details

---

AYLFIGPSID VQSFTVHGDS QQLDVFIATS KHAYATYLTW GEATGQSAFA QVIADRHKIL  
FDRNSAIKSS IVPEVKDYAA IVEQNLQHFQ PVFQLLEKQI LSRVRNTASF RKTAERLLRF  
SDKRQTEEI DRIFAIQQQ QQQSKSKKNR RAGKRYKFVD AVPDIFAQIE VNEKKIRQKA  
QILAQKELPI DEDEEMKDLL DFADVTEKH KNGGLIKGRF GQARMVTTTH SRAPSLASYS  
TRLFLILNIA IFFVMLAMQL TYFQRAQSLH GQRCLYAVLL IDSCILLWLY SSSCSQSQ

Characteristics: Human DSE full-length ORF ( NP\_037484.1, 1 a.a. - 958 a.a.) recombinant protein with GST-tag at N-terminal.

Purification: in vitro wheat germ expression system

## Target Details

---

Target: DSE

Alternative Name: DSE ([DSE Products](#))

Background: Full Gene Name: dermatan sulfate epimerase  
Synonyms: DSEPI,SART2

Gene ID: 29940

NCBI Accession: [NM\\_013352](#)

Pathways: [Glycosaminoglycan Metabolic Process](#)

## Application Details

---

Application Notes: Optimal working dilution should be determined by the investigator.

Comment: Preparation method: in vitro, wheat germ expression system  
Product Quality tested by: 12.5% SDS-PAGE Stained with Coomassie Blue.

Restrictions: For Research Use only

## Handling

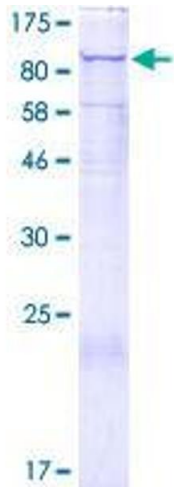
---

Buffer: 50 mM Tris-HCl, 10 mM reduced Glutathione, pH =8.0 in the elution buffer.

Handling Advice: Aliquot to avoid repeated freezing and thawing.

Storage: -80 °C

Storage Comment: Best use within three months from the date of receipt of this protein.



**Image 1.**