



[Go to Product page](#)

Datasheet for ABIN1352064  
**DTWD1 Protein (AA 1-304) (GST tag)**

1 Image

Overview

Quantity:	10 µg
Target:	DTWD1
Protein Characteristics:	AA 1-304
Origin:	Human
Source:	Wheat germ
Protein Type:	Recombinant
Purification tag / Conjugate:	This DTWD1 protein is labelled with GST tag.
Application:	ELISA, Western Blotting (WB), Antibody Array (AA), Affinity Purification (AP)

Product Details

Purpose:	DTWD1 (Human) Recombinant Protein (P01)
Sequence:	MSLNPPIFLK RSEENSSKFV ETKQSQTTSI ASEDPLQNL C LASQEV LQKA QQSGRSKCLK CGGSRMFYCY TCYVPVENP IEQIPLVKLP LKIDIIKHPN ETDGKSTAIH AKLLAPEFVN IYTYPCEIPEY EEKDHEVALI FPGPQISISIK DISFHLQKRI QNNVRGKNDD PDKPSFKRKR TEEQEFCDLN DSKCKGTTLK KIIFIDSTWN QTNKIFTDER LQGLLQVELK TRKTCFWRHQ KGKPDFTFLST IEAIYYFLVD YHTDILKEYK RGQYDNLFF YSFMYQLIKN AKCSGDKETG KLTH
Characteristics:	Human DTWD1 full-length ORF ( NP_064619.2, 1 a.a. - 304 a.a.) recombinant protein with GST-tag at N-terminal.
Purification:	in vitro wheat germ expression system

## Target Details

Target:	DTWD1
Alternative Name:	DTWD1 ( <a href="#">DTWD1 Products</a> )
Background:	Full Gene Name: DTW domain containing 1 Synonyms: MDS009,MGC111207
Gene ID:	56986
NCBI Accession:	<a href="#">NM_020234</a>

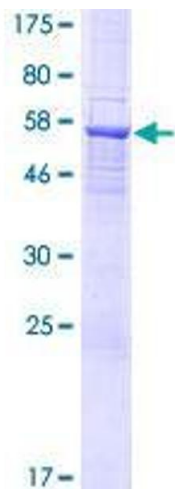
## Application Details

Application Notes:	Optimal working dilution should be determined by the investigator.
Comment:	Preparation method: in vitro, wheat germ expression system Product Quality tested by: 12.5% SDS-PAGE Stained with Coomassie Blue.
Restrictions:	For Research Use only

## Handling

Buffer:	50 mM Tris-HCl, 10 mM reduced Glutathione, pH =8.0 in the elution buffer.
Handling Advice:	Aliquot to avoid repeated freezing and thawing.
Storage:	-80 °C
Storage Comment:	Best use within three months from the date of receipt of this protein.

## Images



**Image 1.**