

Datasheet for ABIN1352087
DUS1L Protein (AA 1-473) (GST tag)



[Go to Product page](#)

1 Image

Overview

Quantity:	10 µg
Target:	DUS1L
Protein Characteristics:	AA 1-473
Origin:	Human
Source:	Wheat germ
Protein Type:	Recombinant
Purification tag / Conjugate:	This DUS1L protein is labelled with GST tag.
Application:	ELISA, Western Blotting (WB), Antibody Array (AA), Affinity Purification (AP)

Product Details

Purpose:	DUS1L (Human) Recombinant Protein (P01)
Sequence:	MPKLQGFEEFW SRTLGRGARHV VAPMVDQSEL AWRLLSRRHG AQLCYTPMLH AQVFVRDANY RKENLYCEVC PEDRPLIVQF CANDPEVFVQ AALLAQDYCD AIDLNLGCPQ MIAKRGHYGA FLQDEWDLQ RMILLAHEKL SVPVTCKIRV FPEIDKTVRY AQMLEKAGCQ LLTVHGRTKE QKGPLSGAAS WEHIKAVRKA VAIPVFANGN IQCLQDVERC LRDTGVQGV M SAEGNLHNPA LFEGRSPAVW ELAEEYLDIV REHPCPLSYV RAHLFKLWHH TLQVHQELRE ELAKVKTLEG IAAVSQELKL RCQEEISRQE GAKPTGDLPF HWICQPYIRP GPREGSKEKA GARSKRALEE EEGGTEVLSK NKQKKQLRNP HKTFDPSLKP KYAKCDQCGN PKGNRCV FSL CRGCCCKRAS KETADCPGHG LLFKTKLEKS LAWKEAQPEL QEPQPAAPGT PGGFSEVMGS ALA
Characteristics:	Human DUS1L full-length ORF (NP_071439.3, 1 a.a. - 473 a.a.) recombinant protein with GST-tag at N-terminal.

Product Details

Purification: in vitro wheat germ expression system

Target Details

Target: DUS1L

Alternative Name: DUS1L ([DUS1L Products](#))

Background: Full Gene Name: dihydrouridine synthase 1-like (S. cerevisiae)
Synonyms: DUS1,PP3111

Gene ID: 64118

NCBI Accession: [NM_022156](#)

Application Details

Application Notes: Optimal working dilution should be determined by the investigator.

Comment: Preparation method: in vitro, wheat germ expression system
Product Quality tested by: 12.5% SDS-PAGE Stained with Coomassie Blue.

Restrictions: For Research Use only

Handling

Buffer: 50 mM Tris-HCl, 10 mM reduced Glutathione, pH =8.0 in the elution buffer.

Handling Advice: Aliquot to avoid repeated freezing and thawing.

Storage: -80 °C

Storage Comment: Best use within three months from the date of receipt of this protein.

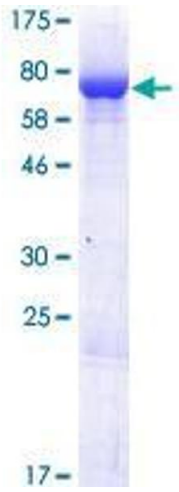


Image 1.