

Datasheet for ABIN1352142  
**DUSP7 Protein (AA 1-320) (GST tag)**



[Go to Product page](#)

1 Image

### Overview

Quantity:	10 µg
Target:	DUSP7
Protein Characteristics:	AA 1-320
Origin:	Human
Source:	Wheat germ
Protein Type:	Recombinant
Purification tag / Conjugate:	This DUSP7 protein is labelled with GST tag.
Application:	ELISA, Western Blotting (WB), Antibody Array (AA), Affinity Purification (AP)

### Product Details

Purpose:	DUSP7 (Human) Recombinant Protein (P01)
Sequence:	MLRRLRKGNL PIRSIIPNHA DKERFATRCK AATVLLYDEA TAEWQPEPGA PASVLGLLLQ KLRDDGCQAY YLQGGFNKFQ TEYSEHCETN VDSSSSPSSS PPTSVLGLGG LRISSDCSDG ESDRELPSA TESDGSPVPS SQPAFPVQIL PYLYLGCAKD STNLDVLGKY GIKYILNVTP NLPNAFEHGG EFTYKQIPIS DHWSQNLSQF FPEAISFIDE ARSKKCGVLV HCLAGISRSV TVTVAAYLMQK MNLSLNDAYD FVKRKKSNIS PNFNFMGQLL DFERTLGLSS PCDNHASSEQ LYFSTPTNHN LFPLNTLEST
Characteristics:	Human DUSP7 full-length ORF ( AAH19107.1, 1 a.a. - 320 a.a.) recombinant protein with GST-tag at N-terminal.
Purification:	in vitro wheat germ expression system

## Target Details

Target:	DUSP7
Alternative Name:	DUSP7 ( <a href="#">DUSP7 Products</a> )
Background:	Full Gene Name: dual specificity phosphatase 7 Synonyms: MKP-X,MKPX,PYST2
Gene ID:	1849
Pathways:	<a href="#">Neurotrophin Signaling Pathway</a> , <a href="#">Activation of Innate immune Response</a> , <a href="#">Toll-Like Receptors Cascades</a>

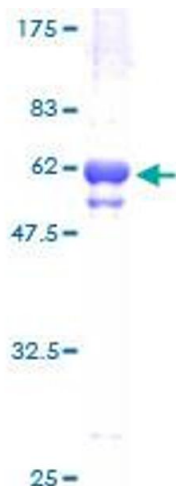
## Application Details

Application Notes:	Optimal working dilution should be determined by the investigator.
Comment:	Preparation method: in vitro, wheat germ expression system Product Quality tested by: 12.5% SDS-PAGE Stained with Coomassie Blue.
Restrictions:	For Research Use only

## Handling

Buffer:	50 mM Tris-HCl, 10 mM reduced Glutathione, pH =8.0 in the elution buffer.
Handling Advice:	Aliquot to avoid repeated freezing and thawing.
Storage:	-80 °C
Storage Comment:	Best use within three months from the date of receipt of this protein.

## Images



**Image 1.**