

Datasheet for ABIN1352160

## DUX4 Protein (AA 1-424) (GST tag)



[Go to Product page](#)

### 1 Image

#### Overview

Quantity:	25 µg
Target:	DUX4
Protein Characteristics:	AA 1-424
Origin:	Human
Source:	Wheat germ
Protein Type:	Recombinant
Purification tag / Conjugate:	This DUX4 protein is labelled with GST tag.
Application:	ELISA, Western Blotting (WB), Antibody Array (AA), Affinity Purification (AP)

#### Product Details

Purpose:	DUX4 (Human) Recombinant Protein (P01)
Sequence:	MALPTPSDST LPAEARGRGR RRRLVWTPSQ SEALRACFER NPYPGIATRE RLAQAIGIPE PRVQIWFQNE RSRQLRQHRR ESRPWPGRRG PPEGRRKRTA VTGSQTALLL RAFEKDRFPG IAAREELARE TGLPESRIQI WFQNRARHP GQGGRAPAQA GGLCSAAPGG GHPAPSWVAF AHTGAWGTGL PAPHVPCAPG ALPQGAFVSQ AARAAPALQP SQAAPAEQVS QPAPARGDFA YAAPAPPDGA LSHPQAPRWP PHPGKSREDR DPQRDGLPGP CAVAQPGPAQ AGPQGQGVLA PPTSQGSPWW GWGRGPQVAG AAWEPQAGAA PPPQPAPPDA SASARQQQM QIPAPSQALQ EPAPWSALPC GLLLELLAS PEFLQQAQPL LETEAPGELE ASEEAASLEA PLSEEEYRAL LEEL
Characteristics:	Human DUX4 full-length ORF (AAI60122.1, 1 a.a. - 424 a.a.) recombinant protein with GST tag at N-terminal.
Purification:	in vitro wheat germ expression system

## Target Details

Target:	DUX4
Alternative Name:	DUX4 ( <a href="#">DUX4 Products</a> )
Background:	Gene: double homeobox, 4 Synonyms: DUX10
Gene ID:	22947

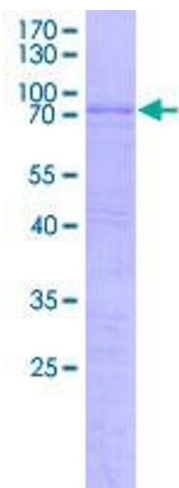
## Application Details

Application Notes:	Optimal working dilution should be determined by the investigator.
Restrictions:	For Research Use only

## Handling

Buffer:	50 mM Tris-HCl, 10 mM reduced Glutathione, pH =8.0 in the elution buffer.
Handling Advice:	Aliquot to avoid repeated freezing and thawing.
Storage:	-80 °C
Storage Comment:	Best use within three months from the date of receipt of this protein.

## Images



**Image 1.**