



[Go to Product page](#)

Datasheet for ABIN1352166
DVL2 Protein (AA 1-736) (GST tag)

1 Image

Overview

Quantity:	10 µg
Target:	DVL2
Protein Characteristics:	AA 1-736
Origin:	Human
Source:	Wheat germ
Protein Type:	Recombinant
Purification tag / Conjugate:	This DVL2 protein is labelled with GST tag.
Application:	Western Blotting (WB), ELISA, Antibody Array (AA), Affinity Purification (AP)

Product Details

Purpose:	DVL2 (Human) Recombinant Protein (P01)
Sequence:	MAGSSTGGGG VGETKVIYHL DEEETPYLVK IPVPAERITL GDFKSVLQRP AGAKYFFKSM DQDFGVVKEE ISDDNARLPC FNGRVVSWLV SSDNPQPEMA PPVHEPRAEL APPAPPLPPL PPERTSGIGD SRPPSFHPNV SSSHENLEPE TETESVSLR RERPRRRDSS EHGAGGHRTG GPSRLERHLA GYESSSTLMT SELESTSLGD SDEEDTMSRF SSSTEQSSAS RLLKRHRRRR KQRPPRLERT SSFSSVTDST MSLNIITVTL NMEKYNFLGI SIVGQSNERG DGGIYIGSIM KGGAVAADGR IEPGDMLLQV NDMNFENMSN DDAVRVLRDI VHKPGPIVLT VAKCWDPSPQ AYFTLPRNEP IQPIDPAAWV SHSAALTGTF PAYPGSSSMS TITSGSSLPD GCEGRGLSVH TDMASVTKAM AAPESGLEVR DRMWLKITIP NAFLGSDVVD WLYHHVEGFP ERREARKYAS GLLKAGLIRH TVNKITFSEQ CYYVFGDLSG GCESYLVNLS LNDNDGSSGA SDQDTLAPLP GATPWLLPT FSYQYPAPHP YSPQPPPYHE LSSYTYGGGS ASSQHSEGSR SSGSTRSDGG AGRTGRPEER APESKSGSGS ESEPSSRGGG LRRGGEASGT SDGGPPPSRG STGGAPNLRA

Product Details

HPGLHPYGGP PGMALPYNPM MVVMMPPPPP PVPPAVQPPG APPVRDLGSV PPELTASRQS
FHMAMGNPSE FFVDVM

Characteristics: Human DVL2 full-length ORF (NP_004413.1, 1 a.a. - 736 a.a.) recombinant protein with GST-tag at N-terminal.

Purification: in vitro wheat germ expression system

Target Details

Target: DVL2

Alternative Name: DVL2 ([DVL2 Products](#))

Background: Full Gene Name: dishevelled, dsh homolog 2 (Drosophila)
Synonyms:

Gene ID: 1856

NCBI Accession: [NM_004422](#)

Pathways: [Tube Formation](#)

Application Details

Application Notes: Optimal working dilution should be determined by the investigator.

Comment: Preparation method: in vitro, wheat germ expression system
Product Quality tested by: 12.5% SDS-PAGE Stained with Coomassie Blue.

Restrictions: For Research Use only

Handling

Buffer: 50 mM Tris-HCl, 10 mM reduced Glutathione, pH =8.0 in the elution buffer.

Handling Advice: Aliquot to avoid repeated freezing and thawing.

Storage: -80 °C

Storage Comment: Best use within three months from the date of receipt of this protein.

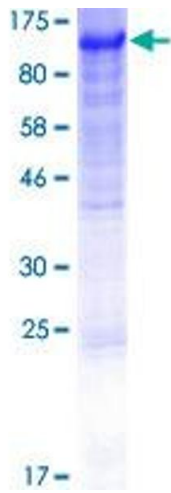


Image 1.