



[Go to Product page](#)

Datasheet for ABIN1352214

DYRK4 Protein (AA 1-520) (GST tag)

1 Image

Overview

Quantity:	10 µg
Target:	DYRK4
Protein Characteristics:	AA 1-520
Origin:	Human
Source:	Wheat germ
Protein Type:	Recombinant
Purification tag / Conjugate:	This DYRK4 protein is labelled with GST tag.
Application:	ELISA, Western Blotting (WB), Antibody Array (AA), Affinity Purification (AP)

Product Details

Purpose:	DYRK4 (Human) Recombinant Protein (P01)
Sequence:	MPASELKASE IPFHPSIKTQ DPKAEEKSPK KQKVTLTAAE ALKLFKNQLS PYEQSEILGY AELWFLGLEA KKLDTAPEKF SKTSFDDEHG FYLKVLDHI AYRYEVLETI GKGSGQVAK CLDHKNNELV ALKIIRNKKR FHQQALMELK ILEALRKKDK DNTYNVVHMK DFFYFRNHFC ITFELLGINL YELMKNNNFQ GFSLSIVRRF TLSVLKCLQM LSVEKIIHCD LKPENIVLYQ KGQASVKVID FGSSCYEHQK VYTYIQSRFY RSPEVILGHP YDVAIDMWSL GCITAELYTG YPLFPGENEV EQLACIMEVL GLPPAGFIQT ASRRQTFDFS KGFPKNITNN RGKKRYPDSK DLTMVLKTYD TSFLDFLRRC LVWEPSLRMT PDQALKHAWI HQSRNLKPQP RPQTLRKSNS FFPSETRKDK VQGCHSSRK ADEITKETTE KTKDSPTKHV QHSGDQQDCL QHGADTVQLP QLVDAPKKSE AAVGAEVSM TSPGQSKNFSL KNTNVLPPIV
Characteristics:	Human DYRK4 full-length ORF (NP_003836.1, 1 a.a. - 520 a.a.) recombinant protein with GST-tag at N-terminal.

Product Details

Purification: in vitro wheat germ expression system

Target Details

Target: DYRK4

Alternative Name: DYRK4 ([DYRK4 Products](#))

Background: Full Gene Name: dual-specificity tyrosine-(Y)-phosphorylation regulated kinase 4
Synonyms:

Gene ID: 8798

NCBI Accession: [NM_003845](#)

Application Details

Application Notes: Optimal working dilution should be determined by the investigator.

Comment: Preparation method: in vitro, wheat germ expression system
Product Quality tested by: 12.5% SDS-PAGE Stained with Coomassie Blue.

Restrictions: For Research Use only

Handling

Buffer: 50 mM Tris-HCl, 10 mM reduced Glutathione, pH =8.0 in the elution buffer.

Handling Advice: Aliquot to avoid repeated freezing and thawing.

Storage: -80 °C

Storage Comment: Best use within three months from the date of receipt of this protein.

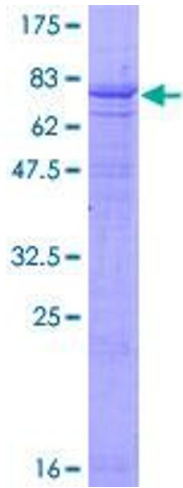


Image 1.