

Datasheet for ABIN1352218  
**PPP1R27 Protein (AA 1-154) (GST tag)**



[Go to Product page](#)

1 Image

Overview

Quantity:	10 µg
Target:	PPP1R27
Protein Characteristics:	AA 1-154
Origin:	Human
Source:	Wheat germ
Protein Type:	Recombinant
Purification tag / Conjugate:	This PPP1R27 protein is labelled with GST tag.
Application:	ELISA, Western Blotting (WB), Antibody Array (AA), Affinity Purification (AP)

Product Details

Purpose:	DYSFIP1 (Human) Recombinant Protein (P01)
Sequence:	MPSRTARYAR YSPRQRRRRM LADRSVRFPN DVLFLDHIRQ GDLEQVGRFI RTRKVSLATI HPSGLAALHE AVLSGNLECV KLLVKYGADI HQRDEAGWTP LHIACSDGYP DIARYLISLG ADRDATNDDG DLPSDLIDPD YKELVELFKG TTMD
Characteristics:	Human DYSFIP1 full-length ORF ( NP_001007534.1, 1 a.a. - 154 a.a.) recombinant protein with GST-tag at N-terminal.
Purification:	in vitro wheat germ expression system

Target Details

Target:	PPP1R27
Alternative Name:	DYSFIP1 ( <a href="#">PPP1R27 Products</a> )

## Target Details

Background:	Full Gene Name: dysferlin interacting protein 1 Synonyms: MGC138299
Gene ID:	116729
NCBI Accession:	<a href="#">NM_001007533</a>

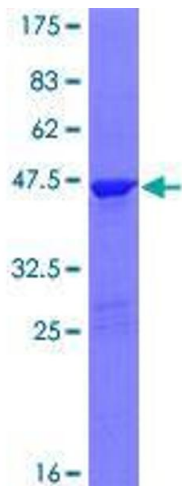
## Application Details

Application Notes:	Optimal working dilution should be determined by the investigator.
Comment:	Preparation method: in vitro, wheat germ expression system Product Quality tested by: 12.5% SDS-PAGE Stained with Coomassie Blue.
Restrictions:	For Research Use only

## Handling

Buffer:	50 mM Tris-HCl, 10 mM reduced Glutathione, pH =8.0 in the elution buffer.
Handling Advice:	Aliquot to avoid repeated freezing and thawing.
Storage:	-80 °C
Storage Comment:	Best use within three months from the date of receipt of this protein.

## Images



**Image 1.**