



[Go to Product page](#)

Datasheet for ABIN1352221

DYX1C1 Protein (AA 336-420) (GST tag)

1 Image

Overview

Quantity:	10 µg
Target:	DYX1C1
Protein Characteristics:	AA 336-420
Origin:	Human
Source:	Wheat germ
Protein Type:	Recombinant
Purification tag / Conjugate:	This DYX1C1 protein is labelled with GST tag.
Application:	ELISA, Western Blotting (WB), Antibody Array (AA), Affinity Purification (AP)

Product Details

Purpose:	DYX1C1 (Human) Recombinant Protein (Q01)
Sequence:	KLKLNHKAIE DSSKALELLM PPVTDNANAR MKAHVRRGTA FCQLELYVEG LQDYEAALKI DPSNKIVQID AEKIRNVIQG TELKS
Characteristics:	Human DYX1C1 partial ORF (NP_570722, 336 a.a. - 420 a.a.) recombinant protein with GST-tag at N-terminal.
Purification:	in vitro wheat germ expression system

Target Details

Target:	DYX1C1
Alternative Name:	DYX1C1 (DYX1C1 Products)

Target Details

Background:	Full Gene Name: dyslexia susceptibility 1 candidate 1 Synonyms: DYX1,DYXC1,EKN1,FLJ37882,MGC70618,RD
Gene ID:	161582
NCBI Accession:	NM_130810
Pathways:	Intracellular Steroid Hormone Receptor Signaling Pathway , Regulation of Intracellular Steroid Hormone Receptor Signaling

Application Details

Application Notes:	Optimal working dilution should be determined by the investigator.
Comment:	Preparation method: in vitro, wheat germ expression system Product Quality tested by: 12.5% SDS-PAGE Stained with Coomassie Blue.
Restrictions:	For Research Use only

Handling

Buffer:	50 mM Tris-HCl, 10 mM reduced Glutathione, pH =8.0 in the elution buffer.
Handling Advice:	Aliquot to avoid repeated freezing and thawing.
Storage:	-80 °C
Storage Comment:	Best use within three months from the date of receipt of this protein.

Images

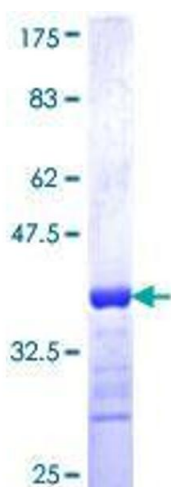


Image 1.