

Datasheet for ABIN1352223
DZIP1 Protein (AA 1-867) (GST tag)



[Go to Product page](#)

1 Image

Overview

Quantity:	25 µg
Target:	DZIP1
Protein Characteristics:	AA 1-867
Origin:	Human
Source:	Wheat germ
Protein Type:	Recombinant
Purification tag / Conjugate:	This DZIP1 protein is labelled with GST tag.
Application:	ELISA, Western Blotting (WB), Antibody Array (AA), Affinity Purification (AP)

Product Details

Purpose:	DZIP1 (Human) Recombinant Protein (P01)
Sequence:	<p>MQAEAADWFS SMPFQKHVYY PLASGPEGPD VAVAAAAAGA ASMACAPPSA ASGPLPFFQF RPRLESVDWR RLSAIDVDKV AGAVDVLTLQ ENIMNITFCK LEDEKCPHCQ SGVDPVLLKL IRLAQFTIEY LLHSQEFLTS QLHTLEERLR LSHCDGEQSK KLLTKQAGEI KTLKEECKRR KKMISTQQLM IEAKANYQC HFCDKAFMNQ AFLQSHIQRH HTEENSHFEY QKNAQIEKLR SEIVVLKEEL QLTRSELEAA HHASAVRFSK EYEMQKTKEE DFLKLFDRWK EEEKEKLVDE MEKVKEMFMK EFKELTSKNS ALEYQLSEIQ KSNMQIKSNI GTLKDAHEFK EDRSPYPQDF HNVMQLLDSQ ESKWTARVQA IHQEHKKEKG RLLSHIEKLR TSMIDDLNAS NVFYKKRIEE LGQRLQEQNE LIITQRQIQ DFTCNPLNSI SEPKGNPLAW QAFESQPAAP AVPMNAPALH TLETKSSLPM VHEQAFSSHI LEPIEELSEE EKGRENEQKL NNNKMHLRKA LKSNSSLTKG LRTMVEQNLN EKLETGGINA DIRGISSDQL HRVLKSVESR RHKQEREIPN FHQIREFLEH QVSKKIEEKA LLSSDQCSVS QMDTLSTGEV PKMIQLPSKN RQLIRQKAVS TDRTSVPKIK</p>

Product Details

KNVMEDPFPR KSSTITTPPF SSEEEQEDDD LIRAYASPGP LPVPPPQNK G SFGKNTVKSD
ADGTEGSEIE DTDDSPKAG VAVKTPTEKV EKMFPHRKNV NKPVGGTNVP EMFIKKEELQ
ELKCADVEDE DWDISSLEEE ISLGKKGSGKE QKEPPPAKNE PHFAHVLNAW GAFNPKGPKG
EGLQENESST LKSSLVTVTD WSDTSDV

Characteristics: Human DZIP1 full-length ORF (NP_945319.1, 1 a.a. - 867 a.a.) recombinant protein with GST-tag at N-terminal.

Purification: in vitro wheat germ expression system

Target Details

Target: DZIP1

Alternative Name: DZIP1 ([DZIP1 Products](#))

Background: Full Gene Name: DAZ interacting protein 1
Synonyms: DZIP,DZIPt1,KIAA0996,RP11-23E3.3

Gene ID: 22873

NCBI Accession: [NM_198968](#)

Pathways: [Hedgehog Signaling](#), [Protein targeting to Nucleus](#)

Application Details

Application Notes: Optimal working dilution should be determined by the investigator.

Comment: Preparation method: in vitro, wheat germ expression system
Product Quality tested by: 12.5% SDS-PAGE Stained with Coomassie Blue.

Restrictions: For Research Use only

Handling

Buffer: 50 mM Tris-HCl, 10 mM reduced Glutathione, pH =8.0 in the elution buffer.

Handling Advice: Aliquot to avoid repeated freezing and thawing.

Storage: -80 °C

Storage Comment: Best use within three months from the date of receipt of this protein.

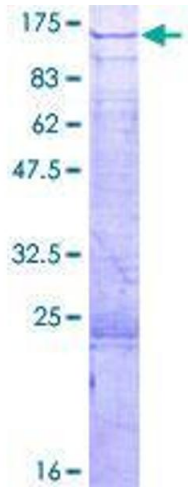


Image 1.