



Datasheet for ABIN1352226
DZIP1L Protein (AA 1-767) (GST tag)



[Go to Product page](#)

1 Image

Overview

Quantity:	25 µg
Target:	DZIP1L
Protein Characteristics:	AA 1-767
Origin:	Human
Source:	Wheat germ
Protein Type:	Recombinant
Purification tag / Conjugate:	This DZIP1L protein is labelled with GST tag.
Application:	ELISA, Western Blotting (WB), Antibody Array (AA), Affinity Purification (AP)

Product Details

Purpose:	DZIP1L (Human) Recombinant Protein (P01)
Sequence:	<p>MQSPAATAEG LSGPLFGAYT FPTFKFQPRH DSMDWRRIST LDVDRVAREL DVATLQENIA GITFCNLDRE VCSRCGQPV D PALLKVLRLA QLIIEYLLHC QDCLSASVAQ LEARLQTSLG QQQRGQQELG RQADELKGVR EESRRRRKMI STLQQLLMT GTHSYHTCHL CDKTFMNATF LRGHIQRRHA GVAEGGKQKK QEQPVEEVLE ELRAKWKWTQ GELEAQREAE RQRQLQEAE IHQREIEAKK EFDKWKEQEW TKLYGEIDKL KKLFWDEFKN VAKQNSTLEE KLRALQSHSV MESKLGSLRD EESEEWLRQA RELQALREKT EIQTTEWKRK VKELHEEHMA EKKELEENQ RLQASLSQDQ KKAQAQSQCQ ISTLRAQLQE QARIASQEE MIQSLSLRKV EGIHKVPAV DTEEDSPEEE MEDSQDEQHK VLAALRRNPT LLKHFRPILE DTLEEKLESM GIRKDAKGIS IQTLRHLESL LRVQREQKAR KFSEFLSLRG KLVKEVTSRA KERQENGA AV SQPDGQPSVK SQQSALVTRE AQPKTRTLQV ALPSTPAEPP PPTRQSHGSH GSSLTQVSAP APHPGLHGPS STPPSSGPGM STPPFSSEED SEGDRVQRVS LQPPKVPSRM VPRPKDDWDW SDTETSEENA</p>

Product Details

QPPGQGSGTL VQSMVKNLEK QLEAPAKKPA GGVSLFFMPN AGPQRAATPG RKPQLSEDES
DLEISSLEDL PLDLQREKP KPLSRSLPE KFGTGPQSSG QPRVPAW

Characteristics: Human DZIP1L full-length ORF (NP_775814.1, 1 a.a. - 767 a.a.) recombinant protein with GST-tag at N-terminal.

Purification: in vitro wheat germ expression system

Target Details

Target: DZIP1L

Alternative Name: DZIP1L ([DZIP1L Products](#))

Background: Full Gene Name: DAZ interacting protein 1-like
Synonyms: DZIP2,FLJ32844

Gene ID: 199221

NCBI Accession: [NM_173543](#)

Application Details

Application Notes: Optimal working dilution should be determined by the investigator.

Comment: Preparation method: in vitro, wheat germ expression system
Product Quality tested by: 12.5% SDS-PAGE Stained with Coomassie Blue.

Restrictions: For Research Use only

Handling

Buffer: 50 mM Tris-HCl, 10 mM reduced Glutathione, pH =8.0 in the elution buffer.

Handling Advice: Aliquot to avoid repeated freezing and thawing.

Storage: -80 °C

Storage Comment: Best use within three months from the date of receipt of this protein.

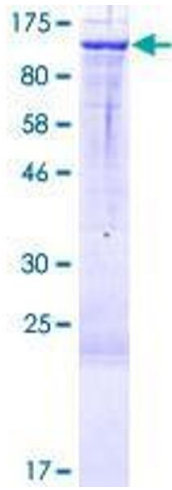


Image 1.