



[Go to Product page](#)

Datasheet for ABIN1352267

EBI3 Protein (AA 1-229) (GST tag)

1 Image

1 Publication

Overview

Quantity:	10 µg
Target:	EBI3 (IL-27b)
Protein Characteristics:	AA 1-229
Origin:	Human
Source:	Wheat germ
Protein Type:	Recombinant
Purification tag / Conjugate:	This EBI3 protein is labelled with GST tag.
Application:	Western Blotting (WB), ELISA, Antibody Array (AA), Affinity Purification (AP)

Product Details

Purpose:	EBI3 (Human) Recombinant Protein (P01)
Sequence:	MTPQLLLALV LWASCPPCSG RKGPPAALT PRVQCRASRY PIAVDCSWTL PPAPNSTSPV SFIATYRLGM AARGHSWPCL QQTPTSTSTCT ITDVQLFSMA PYVLNVTAVH PWGSSSSFVP FITEHIIKPD PPEGVRLSPL AERQLQVQWE PPGSWPFPEI FSLKYWIRYK RQGAARFHRV GPIEATSFIL RAVRPRARYY VQVAAQDLTD YGELSDWSLP ATATMSLGK
Characteristics:	Human EBI3 full-length ORF (AAH15364.1, 1 a.a. - 229 a.a.) recombinant protein with GST-tag at N-terminal.
Purification:	in vitro wheat germ expression system

Target Details

Target:	EBI3 (IL-27b)
---------	---------------

Target Details

Alternative Name:	EBI3 (IL-27b Products)
Background:	Gene: Epstein-Barr virus induced 3 Synonyms: IL27B
Gene ID:	10148

Application Details

Application Notes:	Optimal working dilution should be determined by the investigator.
Restrictions:	For Research Use only

Handling

Buffer:	50 mM Tris-HCl, 10 mM reduced Glutathione, pH =8.0 in the elution buffer.
Handling Advice:	Aliquot to avoid repeated freezing and thawing.
Storage:	-80 °C
Storage Comment:	Best use within three months from the date of receipt of this protein.

Publications

Product cited in:	Guttek, Reinhold: "Stimulated human peripheral T cells produce high amounts of IL-35 protein in a proliferation-dependent manner." in: Cytokine , Vol. 64, Issue 1, pp. 46-50, (2013) (PubMed).
-------------------	--

Images

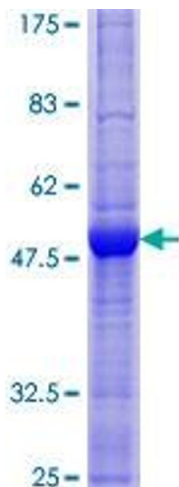


Image 1.